



ENGINEERS NEWS

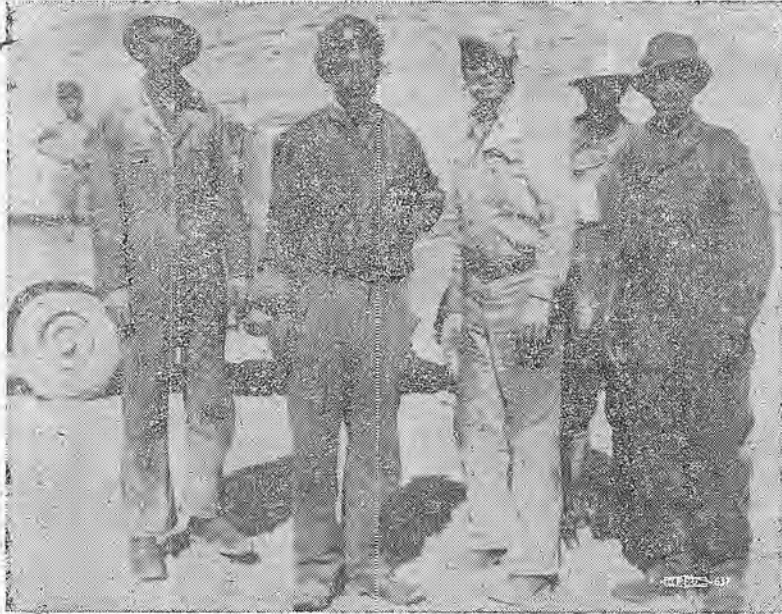
OPERATING ENGINEERS LOCAL 3

STATIONARY ENGINEERS LOCAL 39

VOL. 10—No. 6

SAN FRANCISCO, CALIFORNIA

JUNE, 1952



NATIVE GOES ENGINEER—Shown above is Bro. Roy Kingery, superintendent for Morrison-Knudsen Co. in Afghanistan (in light colored clothes), with a group of workers. Beside him is a native wearing a Local 3 button prominently on his turban. Thus, Local 3 influence extends to the far corners of the earth. Picture was sent by Bro. Kingery to Bro. Les Collett, Marysville business rep. of Local 3.

Terms of AGC Agreement With Operating Engineers

TO ALL MEMBERS OF LOCAL UNION 3

Dear Sirs and Brothers:

We have just completed our negotiations with the Northern and Central chapter of the Associated General Contractors. The agreement was signed June 4th, subject to the approval of the membership of Local Union 3 as well as the Board of Directors of the Associated General Contractors.

At the last regular membership meeting, held June 7th, 1952, the members of Local 3 approved the agreement and we have been advised that the directors of the Association will meet for ratification of same this week.

The contract contains some new clauses and classifications. Included in the agreement are Chief of Party, Instrumentman, Head Chainman, Rodman, Grade Setter, Rear Chainman, Stake Setter, and classifications set up for equipment now operated but not included in the old agreement.

The much-disputed Welfare Plan of 7½¢ per hour will become effective as of February 1, 1953. A committee consisting of an equal number of representatives from

the Union and the Associated General Contractors will be set up to work out the details.

The new wage scales will be effective as of May 1st, 1952 and retroactive to that date. However, contractors cannot pay the new scales until they have been approved by the Construction Industry Stabilization Commission* in Washington, D. C. Although this is routine work, it will require some time, probably three or four weeks, as the agreement must be signed in triplicate and forwarded to the Commission along with an application for wage and other adjustments.

The contracting members of the Associated General Contractors all will come under one application and will be processed as soon as possible. However, there are additional INDEPENDENT construction firms who do not belong to the Association and with whom we have signed separate agreements. This will necessitate a great deal of additional work as these firms must sign individual contracts and be processed individually through the same channels. Therefore, the business representatives must contact all independent construction firms and submit the agreement to them for signature. MEMBERS EMPLOYED BY THESE FIRMS should contact the business agent immediately if their employer IS NOT a member of the Associated General Contractors and HAS NOT signed the new contract.

Until all construction contractors employing members of the

Operating Engineers, Local 3, have been properly certified through Washington, D. C., as previously explained, MEMBERS CANNOT RECEIVE THE NEW WAGE SCALES. It is important that each member, in the meantime, keep an accurate record of all time worked on and after May 1, 1952 so that he will receive proper retroactive pay when the application for wage and other adjustments has been approved in Washington.

For your convenience we are printing in this issue of the Engineers News the MEMBERSHIP ROSTER OF THE ASSOCIATED GENERAL CONTRACTORS, showing the contractor members of the Northern and Central chapters. CHECK THIS LIST CAREFULLY. If the contractor for whom you work IS NOT LISTED, ask if he has signed the new contract. IF NOT . . . notify your business agent immediately!

The new wage scales and classifications have also been printed in this issue. The agreement will be effective for three (3) years but does include an opening clause for wages, which can be re-negotiated May 1st of each year.

The entire agreement will be printed in pamphlet form as soon as possible, for distribution to the membership through the business agents and branch offices.

Trusting I have made the provisions clear to you and assuring you that your cooperation will be appreciated, I am

Sincerely and fraternally,
VICTOR S. SWANSON
Local Union Manager.

Work Picks Up In All Districts

General pick-up in jobs and construction outlay in all districts of Local 3's broad, three-state jurisdiction is reported by the business representatives in their monthly accounts carried in this issue of the News.

Weather was the last big obstacle, and as it cleared away it sent thousands of Engineers to work throughout the region. Snow still clings to the Sierras from the winter's record pack, but mountain road work is now in full swing.

Floods from the melting snows have put many Engineers to work repairing damage that could have been prevented by adequate flood control projects. Pine Flat Dam, which is such a project, is now in full swing, but it was not far enough along to prevent 60,000 acres of the Tulare Lake area from flooding. Land owners and other selfish interests have delayed this project for years.

Strike of Carpenters and other unions has slowed work in the past month, but these difficulties have largely cleared away by now and work is resumed on practically all projects.

Big backlog of jobs slowed by material shortages is also beginning to thaw as more materials are being released by DPA. This provides still another hypo for the June work list of the Operating Engineers.

Members are urged to keep closely in touch with branch union offices so that union men may be placed on all jobs and the amount of new hires may be kept to a minimum for future protection. Don't refuse to take short jobs, there's plenty more to come.

* * *

2 More Members In Military Service

Two more members of Local 3 have entered the armed forces, having taken out Service Withdrawal Cards during the month of May. This brings the total number of our members entering military service since Korea to 298. Following are the new names on our honor roll:

RAYMOND M. HOLT.
RUGGERO DI ADDEZIO.

Huge Construction Stimulates Employment for Engineers in This Area

By PAT CLANCY and CHET ELLIOTT, Business Representatives

Foster & McHaug have started operations on the Veterans Administration Hospital job at Fort Funston, under the able supervision of Project Manager E. H. Hamdorf and Foreman Brother Ray Witmer with the assistance of operators Bros. Smith, Curk and Proudfoot and Heavy Duty Mechanics Bros. Parker, Underwood and Hairell. This firm is now engaged in the pioneer work and expect to have the grading operations in full swing in a few days. The Clementina Company of San Francisco are the sub-contractors on the demolition work.

The Vega Engineering Company of Berkeley was the low bidder on the land clearing. Foreman Brother John Maurice, with Bros. Ellis, Leake, Wright and Cook are well along with the clearing and burning work on the project.

The construction of the \$3 million Permanente Hospital at Anza Vista in San Francisco was awarded to the Louis C. Dunne Company of San Francisco. The Nosenzo Company of San Francisco was the successful bidder on the excavation work and Foreman Brother John Carlin, along with Brother Operators Bellinger, Acosta, Swindal, At-

kinson and Ray Winfred are now industriously engaged on this operation.

At Westlake the never ending expansion program of the Henry Doelger Company is engaged in the preliminary work on Unit No. 5 of this vast modern real estate development project. A great many members of Local 3 have been employed on this project for the past several years. At the present time the up-to-date Village of Westlake provides homes for over 5000 citizens and it is still growing at full capacity.

Ed Keeble of San Jose with Foreman Brother Woods and Operators Bros. Stevens, Haack, Allen and Howard are progressing very

(Continued on Page 12)

OFFICIAL NOTICE TO MEMBERS

JULY MEETING POSTPONED . . . WILL BE HELD JULY 12th, 1952, 8 p.m., in the San Francisco Building Trades Temple at 200 Guerrero Street, San Francisco.

ALL LOCAL No. 3 BRANCH OFFICES IN CALIFORNIA will be closed Saturday, July 5th, 1952.

The regular monthly membership meeting ordinarily scheduled for the FIRST SATURDAY OF EACH MONTH has been laid over until Saturday—JULY 12th—so as not to interfere with the 4th of July Holiday!

TECHNICAL ENGINEERS, Local No. 3-E, meeting will be held in the Union Offices at 474 Valencia St., San Francisco at 8 p.m., Friday, June 27th, 1952.

74 PER CENT OF AFL CANDIDATES WIN

(State Fed. Release)

Seventy-four per cent of AFL-endorsed candidates were successful at the polls in the primary election battle of June 3.

Major disappointment to labor supporters was the defeat of Congressman Clinton D. McKinnon on both tickets in his race to unseat incumbent Senator William Knowland.

In the Congressional elections, the California Labor League for Political Education, official AFL political arm, issued 26 endorsements; 21 of the 26, or 80.7 per cent, were either elected on both tickets or qualified for their own party nomination.

On the State Senate level, 7, or 63.6 per cent, of the 11 AFL-endorsed candidates were elected.

The California LLPE endorsed 61 candidates for the State Assembly. Of these, 46, or 75.4 per cent, were either elected or qualified for their own party nomination.

Better than 50 per cent of the AFL-endorsed candidates were elected in the Assembly primary.

Endorsements by the California LLPE were made at a pre-primary convention of the state AFL body held April 7 in San Francisco. More than 900,000 LLPE endorsement pamphlets were distributed in every county of the state during the primary campaign.



- Melvin L. Redick May 5th, 1952
- Joseph Soares May 6th, 1952
- Robt. Dean Maxwell May 7th, 1952
- John James O'Donnell May 8th, 1952
- John D. Morgan May 14, 1952
- Joel Allen May 20th, 1952
- Lawrence Lutaw May 20th, 1952
- Frank Vierra May 20th, 1952
- Zeno B. Pola May 26th, 1952
- Geo. D. Bornschein May 26th, 1952

What's Doing in the Oakland Office

By AL CLEM, T. D. BRYSON, LOUIS SOLARI, L. L. LAUX, Business Representatives.

During the past month conditions in the East Bay and Oakland office have been more or less in a state of confusion due to the Carpenters' difficulty with the employers. Many of the brothers have moved in and out of the area, changing to new jobs, and then returning to their former employers as pickets were removed.

While we have been able to keep the biggest majority of tractor operators, roller-men, and blade-men busy, in fact experiencing a shortage in some of these classifications, there is a tremendous surplus of crane operators, pile-driver engineers, and shovel operators. Six hundred seven clearances were issued during the 30 days just past.

As you are all well aware, the primary elections took place during the period just passed. We do not think that the showing made by labor in this election is anything to brag about, but perhaps if we all pull together come November, we can do a better job.

GETTING AROUND THE JOBS

The Four Companies at Camp Parks, one of the jobs that has been shut down for a number of weeks, resumed operating Monday, June 2. Forty-three members of the local returned to work, many of these being brothers who had taken other jobs in and out of the area, while some of them had just been taking a few days rest. It is expected that there will be about two months more work at Camp Parks, as there are two warehouses to complete, some road work, and some parking lots. Among the brothers who went back are Red Bosley, O. Hanna, Del Hoyt and Bob Davis.

Bro. Al Hill, shop foreman for Clements and Company, says that things are humming along now, with most of the equipment working, with the following brothers on the payroll: Al Hill, foreman; Joe Giroux, Glen Sala, Jim Akers, Ted Foust, Phil King, Ed Schuldt, Glen Dennet, mechanics; Wylie Frazee and Bill Sala, oilers, and Martin Erickson, helper.

The Peter Kiewit & Sons' highway job at Antioch continues to be the largest job in the area, with approximately 100 members now on the payroll. The first dirt on this project was moved March 3, 1952, and at this writing more than 60 per cent of the excavation work has been completed. The schedule calls for all the dirt to be moved by August 15, with the entire job to be completed in December of this year. District superintendent of the job is G. W. Premo, with J. E. Neville as project superintendent. J. Peckinpough is superintendent of the dirt moving with F. Welsh, C. Kinsey, E. J. Dagget, J. J. Wood, L. Treat, E. Dobbins, and T. M. Hathman acting as foremen. H. Olsen is superintendent on the structures, with Z. Mulligan, C. O. Freeman, W. H. Madison, L. F. Doyle, F. W. Wiggs, R. E. McClarrion, E. C. Cuffey, and R. H. McKinney acting as foremen. F. T. Payne is utility superintendent, working with him are R. Holquist and D. Smith. J. Sneed is master mechanic, and W. St. Jacques is the concrete superintendent. We think one of the many good features of the management of P. Kiewit and Sons on this project is that they are very safety minded. As each new hire is signed on, he is given a copy of the safety specifications pertaining to the job. Once a week the foreman holds a safety meeting with his crew, at which methods of preventing accidents are discussed. One of the safety measures being applied at this time is equipping the La Plante Choate operators with safety belts. This one particular feature is coming in for considerable discussion among the members, and it is the opinion of the safety engineers that the use of these belts will help to prevent many accidents in the future.

Bechtel Corporation has several small jobs going at the Standard Oil Refinery in Richmond, keeping several of the brothers working steadily.

The Chicago Bridge and Iron Company has several tank jobs at

and about 12,000 yards of concrete to lay.

In the Hayward area Silva Brothers continue to keep 10 members of the local busy on subdivision work.

Transocean Engineering Corporation has a half-million dollar job on a factory building at the Hayward Airport. The schedule calls for 120 working days on this job. At the present time they are employing five engineers, and three mechanics.

We would like to draw all the members' attention to the fact that many of you are working for contractors on construction work who are not members of either chapter of the Association of General Contractors. If your employer is not on an agreement with this union will you please notify us, for this means dollars in your pocket.

DREDGE NEWS

Clamshell dredge work continues to be good, and from all indications will keep going at a good pace for some time. Suction dredge work slowed up for a few weeks, but most of the companies kept their men, as they realized they would have work for them in the near future. The time was used getting their equipment in shape for the next job coming up. The S. F. Bridge Company will be moving the Pronto on their Petaluma job about June 15, and will probably be hiring a few new men. This job will start at the mouth of the channel, outside the Black Point bridge, and continue all the way to Petaluma. The Hydraulic Dredging Company is getting ready to take the Papoose out on the Hunters Point job. Some of the men are doing repair work, before the Papoose gets under way.

Indications are that they will be pulling out shortly after June 15. The Olympian Dredging Company has all three of their long boom rigs working, the Neptune on the Hastings Tract out of Rio Vista, and the Holland on McDonald Island, out of Stockton. The Monarch is temporarily in the Bethlehem Shipyard, San Francisco, waiting for the Pile-Butts' strike to be settled so they can go on the P. G. & E. job, where they are putting a power line across the bay, paralleling the San Mateo Bridge.

The California Dredging Company (Simpson Brothers) have their dredge working on Bethel Island, where they have a job which will last for some time. They will be strengthening the levees all the way around the island. It is estimated that they will be busy for approximately two years.

Dutra Dredging Company has both of their dredges busy, the Mallard doing levee work on little Holland Island, and the Edwards reclaiming land for Leslie Salt, near Alviso. Ed Lippstrue has his dredge the Solano working two shifts near Alviso, for the Leslie Salt Company. Their dredge, the Pacific, is working near Tiburon, and at the last report was running just one shift. The Associated Dredging Company has their dredges, the Curlew and the Liberty, working for Leslie Salt, the Curlew off Newark, and the Liberty off Alvarado.

Bids are scheduled to be opened on June 11, 1952, for a big job coming up in the near future. According to the specifications this job could be handled in one of two different ways. The first proposal involves 1,196,000 yards dredging, a part of which would be stripping the mud from the sand off the Bay Bridge Toll Plaza, then pumping the sand to the job site. The alternate proposal involves about 660,000 yards of clear fill, either sand dredged from the bay at a point off Treasure Island and transported to the spoil area in hopper dredges, or rock and earth fill imported from the hills.

NEWS ABOUT THE BROTHERS

Bro. George Gisel, who seems to have wandering feet, is off again! Some of the brothers may remember seeing in a few issues back that George has been home only a short

time from New Zealand. This time he is off for Anchorage, Alaska, where he will operate a mucking machine for Coker & Palmer of Seattle. While the Coker & Palmer job will last three years, George says that come winter he will probably be on his way home.

Bro. John E. Noland in getting a withdrawal card before leaving on a trip to Hastings, New York, where he plans to spend a few weeks with his family before being called into the Army. John is looking for his greetings from his neighbors in the near future, so we presume the next time we see him he will be in uniform.

Bro. Sam Scoville, powerhouse engineer at Todd Shipyard, Alameda, for the past several years, suffered a stroke some time back, but is now recuperating satisfactorily. Sam calls in from time to time just to shoot the breeze. We have an idea that perhaps he is a little lonesome; and we are sure Sam would welcome a call from the brothers who know him.

Bro. Cal Relyea, who for the past several months has been employed on the J. H. Pomeroy Project at Columbia Steel, Pittsburg, dropped by the office, and in the course of our conversation, we found out that he has been operating a dragline in a building, most of the winter. As if this wasn't a soft enough touch, Cal tells us that the building was steam heated, no less.

Bro. Joe W. McFarland, who is working for Utah Construction on their Bear River job, was in the other day bragging again. Some time back he had some kind of a record as the youngest member of the local to be a grandfather. Now he tells that it's happened again—this time twins, no less, born to Joe's daughter, Linda.

During the past month Bro. Vernon Clow, who is currently working on the Big Eildon Dam job, in Victoria, Australia, sent a note to his friends in the local by Bob Mag, who has been working with Verne on the Utah Construction job on the Eildon River for the past 18 months. Verne and Bob are agreed that it is quite rainy in this part of the world; in fact about 50 per cent of the time work is held up because of bad weather. About the most interesting piece of information we got from Bob is that while living costs in Australia are considerably lower than in the states, wages are terrible! A shovel runner earns about \$32 a week, American, for 40 hours, so you can see they don't have many bucks to play around with. Verne is thinking of returning to the states, but is as yet undecided, and may sign on for another hitch.

Bro. Al Williams and Bro. H. Hunt, members of Local 3 for the past 12 years, have gone into the construction business for themselves, having bought a 10-ton truck-crane, and are equipped to do dragline, clamshell, structural steel, and all kinds of crane work. The new business began operation June 2, and the boys can be reached by telephone at LO. 9-4769.

Bro. Thomas Aker back from a five-month stint in Okinawa, where he was working 10 hours a day, 7 days a week, weather permitting. Bro. Mel Lambert, of the local, is also in Okinawa.

Bro. Winge Cardoza, an old-timer in the local, who is just back from a 11-month hitch with Morris Knudson in Afghanistan, dropped by for a clearance to the Frederickson & Watson Dublin job. Winge tells us that he was holding down about three men's jobs in Afghanistan, working up to a hundred hours a week, which was a little tough for him. Winge says that it was because of the extremely long hours that he returned to the States, but after talking to him, it is our opinion that the primary reason that Winge beat it back to God's country, was the lack of feminine companionship, for he tells us that there were very few of the fair sex in that neck of the

woods. Those of us who know Winge realize that as far as Winge is concerned, "that's for the birds."

Bro. Cardoza found living conditions quite satisfactory, and tells us that the food was good, meat being quite plentiful, as Morris Knudson has a ranch in Afghanistan, where they raise their own beef. The supervisors on the job are all from the States, but the operators are drawn entirely from the native population. Most of the natives have had no previous mechanical experience, and at first are afraid of the equipment. Weather conditions are favorable, with considerable cold weather, because the altitude is high. Since Winge's return to the states he has been married.

After hearing some of the stories the brothers have to tell about these foreign jobs, we are of the opinion that conditions around Local 3 are not so bad after all.

If any of the members of the local are interested in buying furniture for their homes, one of our neighbors, the Wilton Furniture Company, 1535 Harrison street, is prepared to give any of the brothers or their families a substantial discount upon presentation of their union card, or in lieu of the card, if any of you care to call at the office we will furnish you with an introductory card. If you are interested in furniture at this time, it may pay you to look around at Wiltons.

★ ★ ★

PLENTY WORK ON PENINSULA

By HARRY METZ, Business Representative

This is the time of the year when reporting on the jobs is a pleasure! With plenty of work and a full summer ahead of us everyone is happy . . . in addition to the fact that we have the new AGC Agreement behind us, with a substantial gain in all classifications! READ our Local Union Manager's report on the agreement, it is of interest to all members.

As usual we are short of good blade-men and cat-skinners. A breakdown of some of the important jobs follows: Piombo Construction Company is making very good progress on their Bayshore Freeway job . . . Healy-Tibbetts is working alongside the Piombo job on a new sewer line . . . Both companies have had to fight a terrific traffic problem!

Bids are expected to be asked in the next 60 days for the next unit of the Bayshore Freeway to consist of five miles extending from the southern San Mateo City limits to two-tenths of a mile south of Branston Road, San Carlos. This extension of the freeway will eliminate 21 grade intersections in San Mateo.

L. C. Smith is making good progress in re-surfacing a portion of the freeway. McCammon & Wonderlich are still working on the Belmont Airport and have just been awarded the surfacing of the Alpine Road near Portola, Also, John Delphia is finishing up the grading of the same section of Alpine Road . . . Barbettini rigs are still working on the Baywood Realty Company sub-division . . . The Coast Pipe Line Company is doing the sewer work on the same job.

Sterling Home Builders are opening up a new sub-division at the foot of Roosevelt Ave. in Redwood City and Ed Keeble will do the grading and street work for them.

Floyd Watson has all his rigs back working at Stoneson's Winston Manor job. This work was held up due to the Carpenters' strike. Maguire & Hester going along on their sewer job on Barneson Ave. . . Bragato Paving Company has all equipment working on various jobs in the county . . . also in this category are the E. T. Haas Company . . . All in all it looks like a very good year for the construction industry!

New Wage Scale

North and Central California AGC

The following classifications and wage scale are applicable retroactive to May 1st after the new contract is approved by the NLRB.

On all work performed on May 1, 1952 and thereafter during the term of this agreement (regardless of when said work was bid or let) the wage scales and classifications shall be as follows:

Table with two columns: Classification and Per Hour. Rows include Apprentices (oilers, firemen, watchmen) at \$2.28, Asphalt Plant Engineer at \$2.67, Box men or mixer box operator at \$2.34, Brake man, Switchman and Deckhand at \$2.28, Fuller-Kenyon pump cement hog and similar types of equipment at \$2.72, Compressor Operator at \$2.28, Concrete Batch Plant Operator at \$2.67, Concrete Mixers (up to 1 yd.) at \$2.28, Concrete Mixers (over 1 yd.) at \$2.61, Concrete Pump or Pump Crete Guns at \$2.61, Derricks (including Chicago Booms) at \$2.83, Drilling Machinery Engineers at \$2.67, Dual Drum Mixer at \$2.72, Euclid Loaders at \$3.00, Fireman in Hot Plant at \$2.28, Fork lift or lumber stacker at \$2.56, Handi-Crane at \$2.72, Heavy Duty Repairman at \$2.67, Heavy Duty Rotary Drill Rigs at \$2.90, Highline Cableway at \$3.00, Locomotives at \$2.39, Locomotives (steam or over 30 tons) at \$2.67, Material Hoist at \$2.56, Mechanical Finishers at \$2.67, Mixermobile at \$2.72, Motorman at \$2.39, Mucking Machine at \$2.80, Pavement breakers at \$2.72, Portable crushers at \$2.67, Power blade loader at \$2.90, Power grader at \$2.83, Power shovels at \$3.11, Power shovels and/or other excavating equipment at \$2.83.

Power shovels and/or other excavating equipment with shovel-type controls (All other Counties) (over one yard) 3.00. Pugmills (all) Woodsmixer type 2.72. Pumps 2.28. LeTourneau pulls (Jeeps, Terra Cobras, LaPlant Choate, and similar types of equipment) 2.83. Refrigeration Plant Operator 2.72. Rollers 2.67. Ross Carriers (on construction job site) 2.39. Scoopmobile (when used as a hoist) 2.56. Scoopmobile (when used as a loader) 2.72. Screenshot Man 2.28. Self-propelled elevating grade plane 2.72. Spreader Machines (Barber Green, Jaeger, etc.) (Engineer and screed man used in operation) 2.67. Soil Stabilizer Operator (P & H or equal) 3.00. Surface heaters 2.67. Towermobile 2.56. Tractors 2.67. Tractor (boom) 2.83. Tractor (tandem) 3.00. Tractor-type shovel loader (scale not to apply when used as blade or bulldozer) 2.83. Trenching Machine 2.72. Truck type loader 2.83. Truck crane 2.83. *Chief of Party 2.97. *Instrumentman 2.70. *Head Chainman, Rodman, Grade Setter 2.42. *Rear Chainman 2.28. Employees working in tunnels, shafts, stopes or risers shall receive \$0.125 per hour over and above the regular rate. When members of the Union are employed to service a specialty craft exclusively they shall receive the same working conditions as the specialty craft. The wages for the Operating Engineer shall be \$2.90 per hour on all hoisting equipment when servicing said specialty craft. Regular employees on the particular project and assigned to work with a specialty craft temporarily shall not be entitled to the above mentioned conditions, except for overtime, then the members of the Union so assigned shall receive double time if the specialty craft is receiving it. *The classifications herein referred to shall apply only to contractor's employees regularly employed in field survey work, excluding individual employer, executive, administrative or supervisory personnel, professional or office engineering personnel, draftsmen, estimators, timekeepers, messenger boys, guards, clerical help or field office help, and the use of survey instruments normally used by any other employees in the performance of their duties. Field survey work shall be that work performed by employees in the classifications herein referred to in connection with the establishment of control points governing construction operations, when performed by the employer on any type of home, office or commercial building construction. On all other types of heavy, highway and engineering construction, when employer is required by contracting authority to furnish own field survey service or when employer at his own discretion hires employees to perform field survey work, then in such instances, such work shall come within the classifications herein mentioned. For any field survey work beyond the direct control of the employer, the referred to classifications and conditions shall not apply. The Union will cooperate with the employer in the placing of student engineering trainees, so long as it does not materially affect the normal employment of regular employees. This agreement does not cover inspectors.

AGC EMPLOYER LIST

All members of the Northern California Chapter and the Central California Chapter of the Associated General Contractors are listed herein. Any member who is working for an employer not listed here should get in touch with the Business Agent immediately. There are quite a few associate members of the AGC who will have to sign individual contracts with the union. This is being done now. The new Master Agreement will be printed in full and distributed by the various offices of Local 3 in the near future.

NORTHERN CALIFORNIA CHAPTER AGC MEMBERS SIGNATORY TO MASTER AGREEMENT

- Ace Excavators, 1020 44th Ave., Oakland 1, Calif.
Alves, Eugene G., P.O. Box 950, Pittsburg, Calif.
Amaral, M., 512 Baker Street, Petaluma, Calif.
Anson-Smith Construction Co., 326 Eye St., Marysville, Calif.
Archibald, F. R., 718 Douglas Ave., Oakland 3, Calif.
Archibald, J. O., 929 Shasta Street, Redwood City, Calif.
Aris-Knapp Co., 961 41st Street, Oakland 8, Calif.
Armstrong, J. R., 400 Central Ave., El Cerrito, Calif.
Artukovich, P. and J., Inc., P.O. Box 785, Port Chicago, Calif.
Associated Engineers, 3606 El Camino Real, Palo Alto, Calif.
Associated Pipeline Welders, Inc., P.O. Box 563, Old Mission Road, Colma, Calif.
Asta Construction Company, P.O. Box 758, Rio Vista, Calif.
Atkinson, Guy F., Company, 10 West Orange Ave., South San Francisco.
Atkinson Bros., Inc., 604 N. Genevieve Lane, San Jose, Calif.
Augusta, Geo., P. O. Box 1545, 594 El Camino N., Salinas, Calif.
Bailey Construction Company, Jay, P. O. Box 127, Corner Fortna and Harter Aves., Woodland, Calif.
Baldwin Contracting Company, Incorporated, 26 Francisco Blvd., San Rafael, Calif.
Ball Sons, N. M., 685 Delaware St., Berkeley 10, Calif.
Ball & Simpson, 685 Delaware St., Berkeley 10, Calif.
Ballinger & Son, W. R., 355 Barneveld Ave., San Francisco 24.
Barbattini, E., 2251 Quesada Ave., San Francisco 24.
Bateman, J. C., 650 Stockton Ave., San Jose 11, Calif.
Bates & Rogers Construction Corp., 209 Post St., San Francisco 8.
Baun Construction Company, 324 Princeton, Fresno, Calif.
Bechtel Corporation, 220 Bush St., San Francisco 4.
Beerman & Jones, Sonora, Calif.
Biasotti & Son, Louis, 40 W. Clay St., Stockton 36, Calif.
Bigge Drayage Co., 2387 Campbell St., Oakland 7, Calif.
Bishop, E. B., Orland, Calif.
Blakeslee-Spiering Co., P. O. Box 447, 2200 Bridgeway, Sausalito, Calif.
Blomquist Oil Service, Inc., Chestnut St., Redwood City, Calif.
Bobo, Fabian, Rt. 1, Box 30, San Rafael, Calif.
Bormolini, Louis & Son, P. O. Box 101, Novato, Calif.
Bragato Paving Co., 1650 Old County Road, Belmont, Calif.
Breen, J. P., Company, P. O. Box 183, Sacramento 1, Calif.
Brennan, J. P., Zeis Building, Redding, Calif.
Bressi & Bevanda Constructors, Inc., P. O. Box 439, North Hollywood, Calif.
Brighton Sand and Gravel Co., P. O. Box 2604, Sacramento 10, Calif.
Brown-Ely Co., Contractors, 7360 Schmidt Lane, El Cerrito, Contra Costa County, Calif.
Brown, M. W., P. O. Box 222, Redding, Calif.
Burman and Sons, John, 2750 Harrison Ave., Eureka, Calif.
Burnett Construction Co., P. O. Box 487, 159 West Glenn St., Coalinga, Calif.
Butte Creek Rock Co. (Gilbert Alm), P. O. Box 512, Chico-Paradise "Skyway," Chico, Calif.
Byers, R. W., P. O. Box 67, Redding, Calif.

- California Steel Products Co., Richmond, Calif.
Callahan Construction Co., 7328 Mission St., Daly City, Calif.
Campbell Construction & Equipment Co., 465 10th St., San Francisco 3.
Cannon Construction Co., 142 N. California St., Stockton, Calif.; 275 Santa Margarita Ave., Palo Alto, Calif.
Cantrell, L. V., 1933 El Dorado Ave., Berkeley 7, Calif.
Capital Company, 1 Powell St., San Francisco, Calif.
Capps, Gordon L., P. O. Box 583, Stockton, Calif.
Cardwell, Leo, Construction Co., 530 Pacific Ave., Santa Cruz, Calif.
Castro, Earl W., Route 2, Box 202, Martinez, Calif.
Castro Valley Rock Co., 20450 John St., Hayward, Calif.
Cheyreaux, Joe, P. O. Box 65, Station A, Auburn, Calif.
Clark, L. C., 422 Park Ave., Visalia, Calif.
Clements & Co., 775 Jackson St., P. O. Box 277, Hayward, Calif.
Cleverdon Company, Inc., Rt. 1, P. O. Box 1, Lafayette, Calif.
Clifford, R. G., 2950 Claremont Avenue, Berkeley, Calif.
Close Building Supply, 721 "C" St., Hayward, Calif.
Clough, L. M., Co., 996 66th Ave., Oakland 3, Calif.
Coast Pipeline Contractors, Commercial and Old County Road, Belmont, Calif.
Condick Co., 806 Hearst Ave., Berkeley 2, Calif.
Conduit Construction Co., 3510 Peralta St., Oakland 8, Calif.
Conner, Harvey E., 60 Center St., San Carlos, Calif.
Conner, J. L., Jr., P. O. Box 835, Eureka, Calif.
Corbett, Frank D., 99 N. 17th St., Sacramento, Calif.
Crocco & Hanson, 1010 Tennessee St., Vallejo, Calif.
Chas. I. Cunningham Co., 334 So. Yosemite Ave., P. O. Drawer "E", Oakdale, Calif.
Dahms, O. R., Construction Co., Rt. 7, Box 1143, Sacramento, Calif.
da Roza & Ribal, Inc., P. O. Box 1727, Monterey, Calif.
Darrough, W. H., & Sons, P. O. Box 392, Live Oak Highway, Yuba City, Calif.
Delphia, John, P. O. Box 607, 14 North Third St., Patterson, Calif.
Delta Construction Company, Box 457, Rio Vista, Calif.
Douglass & Woodhouse, P. O. Box 908, Redwood City, Calif.
Downer Company, Inc., 305 East Weber St., Stockton 11, Calif.
Draper, Archie, P. O. Box 266, 240 Walnut St., Red Bluff, Calif.
Dreher & Beaulieu General Contractors, 235 So. 18th St., Richmond, Calif.
Duncanson-Harrelson Co., The, 530 West Cutting Blvd., Richmond, Calif.
Eaton & Smith, 1215 Michigan St., corner 24th, San Francisco 7.
Edwards, James J., 904 Elm St., San Carlos, Calif.
Ehrhart & Arthur, Inc., 417 South Hill St., Los Angeles 13, Calif.
Eichley Corporation, 322 Monadnock Bldg., 681 Market St., San Francisco 5, Calif.
Ely, I. J., Co., 685 Butterfield Road, San Anselmo, Calif.
Emsco of San Francisco, 1020 Harrison St., San Francisco 3, Calif.
Engineered Fixture Systems, P. O. Box 203, Mountain View, Calif.
Engineers Limited Pipeline Co., 225 Bush St., San Francisco 4, Calif.
Erickson & Co., Al, P. O. Box 384, Napa, Calif.
Erickson, Phillips and Weisberg, 3341 Telegraph Ave., Oakland 9, Calif.
Fairfield Trucking Company, Box 568, Fairfield, Calif.
Farish, Robert A., 50 Hawthorne St., San Francisco 5, Calif.
Fay Improvement Co., 101 Carolina St., San Francisco 3, Calif.
Fazio, Walter E., 981 Coronado Blvd., Sacramento, Calif.
Ferguson Bros., 8923 San Leandro St., Oakland 3, Calif.
Fogelberg, O. A., Mt. Diablo Blvd. and Elizabeth St., Lafayette 2, Calif.
Forde Co., E. A., 3 Bank St., P. O. Box 306, San Anselmo, Calif.
Fortuna Construction Co., P. O. Box 454, Fortuna, Calif.
Foster & McHarg, P. O. Box 1589, Marysville, Calif.

- France, George E., Inc., 1509 College Ave., Visalia Calif.
Francies Construction Co., P. O. Box 935, Santa Rosa, Calif.
Fredericksen & Kasler, 212 13th St., Sacramento, Calif.
Fredrickson Bros., 1259 65th St., Emeryville 8, Calif.
Fredrickson & Watson Construction Co., 873 81st Ave., Oakland 3, Calif.
French, George, Jr., 2101 E. Weber St., Box 307, Stockton, Calif.
Gallagher & Burk, Inc., 344 High St., Oakland 1, Calif.
Gerwick, Ben C., Inc., 112 Market St., San Francisco 11, Calif.
Gist, John C., 1020 46th St., Sacramento 16, Calif.
Granite Construction Company, Box 900, Watsonville, Calif.
Haas & Haynie (formerly Haas Construction Co.), 275 Pine St., San Francisco 4, Calif.
Haas, E. T., 407 Harbor Blvd., P. O. Box 95, Belmont, Calif.
Harkins, Wallace D., 635 Jackson St., Albany 6, Calif.
Harmeling, Karl C., 1710 Mt. Diablo Ave., Stockton, Calif.
Harms Bros., 5261 Stockton Blvd., Sacramento 17, Calif.
Harney, Chas. L., Inc., 575 Berry St., San Francisco 7, Calif.
Harris, J. Henry, 2657 Ninth St., Berkeley 2, Calif.
Hasler, M. H., Construction Company and D. & H. Construction Company, P. O. Box 1-A, Folsom, Calif.
Helwig Construction Co., 167 Morris Ave., Sebastopol, Calif.
Hoagland - Findlay Engineering Company, 3254 Cherry Ave., Long Beach 7, Calif.
Huetting, Schromm & Bennett, P. O. Box 798, 300 Bryant St., Palo Alto, Calif.
Huntington Bros., P. O. Box 474, Napa, Calif.
Immel, Lee J., 3030 San Pablo Ave., San Pablo, Calif.
Independent Construction Co., 741 50th Ave., Oakland 1, Calif.
Industrial Engineers & Contractors, Inc., 711 Middle Waterway, Tacoma, Wash.
Isbell, C. V., P. O. Box 2351, S. Virginia Road, Reno, Nevada.
Jenkins, M. A. and R. E. Hertel, 4521 15th Ave., Sacramento 17, Calif.
Johnson, A. C. & Sons, 25 Sixth St., Eureka, Calif.
Johnson & Nelson, 718-A San Anselmo Ave., San Anselmo, Calif.
Jones, Lew, Construction Co., 1535 South Tenth St., San Jose, Calif.
Jones, O. C. & Sons, 1520 Fourth St., Berkeley 10, Calif.
Jones, W. B., Pala Cedro, Calif.
Jones, Winton, P. O. Box 34, 1770 Riviera St., Walnut Creek, Calif.
Justice-Dunn Co., 1260 59th St., Oakland 8, Calif.
Kaiser Engineers, Division of Henry J. Kaiser Company, 1924 Broadway, Oakland 12, Calif.
Keeble, Edward, Rt. 4, Box 64, Tully Road, San Jose, Calif.
Kelley Bros. 810 San Ramon, Sacramento, Calif.
Kenworthy, C. V., 2037 East Harding Way, Stockton, Calif.
Ke-ston & Muny, 3477 Liberty Blvd., South Gate, Calif.
Kevry Construction, Inc., 655 Peralta Ave., San Leandro, Calif.
Kiewit, Peter, Sons' Company, 442 Post St., San Francisco 2, Calif.
Koller, Stanley H., 1694 Pomona St., Crockett, Calif.
Lane Company, E. V., P. O. Box 417, 2675 Third St., Palo Alto, Calif.
Lauritzen, H. F., P. O. Box 470, Pittsburg, Calif.
Lee Construction Co., 1575 Lake Chabot Road, San Leandro, Calif.
Lentz Construction Co., 2416 Sutterville Road, Sacramento 17.
Lord & Bishop, P. O. Box 812, Sacramento 4, Calif.
Los Gatos Construction Co., P. O. Box 111, Los Gatos, Calif.
Lowell, E. E., Contractor, Inc., 1331 Virginia St., Vallejo, Calif.
Lowrie Paving Company, Inc., 1755 Evans Ave., San Francisco 24.
Lyles, W. M. Co., P. O. Box 495, 600 E. Monterey St., Avenal, Cal.
Lynch, M. J., 2251 Revere Ave., San Francisco 24, Calif.
Macal Improvement Co., Inc., Rt. 1, Box 99, Wilbur Ave., Antioch, Calif.
Macco Corporation, 14409 Paramount Blvd., Paramount, Calif.

SACRAMENTO, HUB OF THE VALLEY IS BUSY

By E. P. PARK and H. S. CLARK, Business Representatives

Now that our negotiations are behind us and the carpenters have settled their differences it looks like a busy season ahead. We still find ourselves at the crossroads of all routes leading South, North, East or West and, consequently, when the brothers are on the move they pass this way. For this reason we anticipate no shortage of men in the area but are hopeful that we can keep the majority of those that are here busy for the season at least.

Winston Bros. Co. and Al Johnson Construction Co. were low bidders on the Nimbus Dam job at \$6,075,732.50. It will be some time before they get rolling but it should afford considerable work once it is under way.

A. Tiechert picked up a \$277,026.50 road job in Yolo County. This should provide some good jobs.

Brighton Sand and Gravel has another piece of the El Centro Road for \$348,143.75. This will be the most direct route to Marysville when completed.

Morrison-Knudsen were low on the South Fork Road relocation at \$461,231. This is another job in connection with the Folsom project. We have no word as to when they will get rolling but it should be in the near future.

Atkinson is off to a slow start but expects to speed up considerably in the near future. Brother Joe Canto is back to take over where he left off last year. Earl Jennett is the project manager. Many of the brothers will remember him from the North Sacramento Freeway.

Building jobs, subdivisions, sewers, streets, etc. too numerous to mention were let during the past month. However, we still are able to man all jobs except in certain classifications. The run on diamond drillers has been quite heavy—this being the only classification we were short on.

In the foothills of this district the construction work is picking up rapidly. The Peterson Construction Co. of Hollywood has moved into Georgetown on a two-mile road job. Brother Vern Story is the boss and Walt Gavrilko, Jess Burch and Jack Miller are the operators. These brothers are doing the clearing. The company will have several more cats in the near future.

Joe Vicini, at Placerville, has the brothers working on two schools and also several rigs are working at Camino for the Michigan-California Lumber Co. They are leveling off for log piles. Joe also has some of his rigs working at Folsom on a road job.

Henningson Bros. keep the boys going in and around Placerville. Charles Kammerer is the engineer pulling the levers on the dragline, with Norm Henningson oiling. This firm has a batch plant in Placerville with transit-mix cement. They also have all types of hauling, including furniture vans and transports and all types of building materials. Call them at Placerville 99.

The California Rock Products Co., at Auburn, is just about to begin summer operations. They should be quarrying about June 15. Bob Hall has held down the 54-B this winter, mostly stockpile work mixed with a little repairing. Bob Callender has kept Brother Hall supplied with oil and grease at this plant.

Joe Chevreaux keeps the brothers busy around Auburn doing road work, etc. He also keeps his plant on Bear River busy at all times. Brother Harry Powning is in charge of the batch plant and repair shop. Brothers Woods and Weaver keep the repairs going.

Ted Schwartz, at Grass Valley, keeps his engineers busy most of the time. Ted is contemplating a good-sized job in the brush this summer. If it develops, there should be plenty of work for the engineers on the project.

The trenching contractors in the Sacramento area are showing indications of a busy season. John DeVriend, with Bill Rafferty and Jim McDermott, operators, has several sewer jobs. Bill Terrell manages to keep all four of his trenchers busy. Del Mar Hopkins

keeps his small blade and Fordson going at all times with backfilling ditches and leveling.

J. R. Reeves, McGillivray, Teichert, Lentz and the rest of the contractors are keeping the brothers busy at this time on subdivisions, sewer lines, bridge approaches, etc.

HERE AND THERE WITH THE BROTHERS

Earl Brown running a lathe; Tony Carey firing kiln; Herb Simpson mucking rock; Alex Gray nut busting; Tom Latham operating a grease gun; Carl Clark wondering; Nick and Bill Gavrilko loading DW-10s; Philip Weaver, Fordson on Highway 40; Leo Wright, electric pull on Highway 40; Van Strickland, building park; Bill Simpson parking a rig; Bill Mason and Henry Moretti working on a blade; Bob Adams on his way to Arabia; Ernie Nelson and Jim White building a soap plant; Bob (Hard Rock) Johnson camping; Bill Gross operating a backhoe; Wes Kemna building grade; Bob Cooper braking; Brother Molman cutting fire break; Charles Walker, Red Gorham, John Hartman, and Jess Burch building a levee in another state; Oran Cobb looking over 24th Street road; Jack Miller blading; Ted Brown slurring; Bob Noble running a hot plant; Pat Caldwell feeding a plant; Bill Yock attending regular meeting; Buck Pelton heading for the brush, and Vern Cantrall, waiting.

PERSONALS

Best wishes for a speedy recovery to Brother Vern Curtis, who is in the Woodland Hospital suffering burns on arms and leg; Brother Oscar Bell, who is in Auburn Hospital waiting to undergo an operation; Bob Gwyn, who was laid up for almost a month; Jess Kyle, who made a short trip to the hospital last month; and to Stirling Pirtle and family, whose little girl suffered an injured leg at the same time Mrs. Pirtle was ill and confined to bed. Brother Sidney Lee is now out of the hospital and ready to go again.

Thanks to Brother James S. Kemp, who dropped us a line requesting we remove his name from our out-of-work list as he had been cleared to a job from another office. Thanks to Brother Forrest E. Derwent, who also dropped us a card for the same reason.

When reporting on the United Concrete job in West Sacramento last month, we overlooked Brother Bob Patterson who is shifting out there. He's one of the first engineers on the job, too.

Anyone knowing the whereabouts of Brother D. L. Cummons, please tell him that we are still holding a retroactive pay check for him.

Brother Lewis Heaston received a very nice compliment and recommendation in the way of a letter from the Sacramento Bee for the manner in which he performed his work as an engineer in the erection of their new building. This is a deviation from the policy of a great many papers, which give organized labor only bad publicity.

Good luck to Brother Vern Ruckman, who has opened a rooming house at 112 Church St., Roseville. Phone 643-J.

BLOOD BANK

We haven't had a single donation to the Blood Bank this past month. Remember that if you or your family need blood, we cannot help you unless we have an ample supply in our reserve at the bank. So, if you can give blood, do so. By building our fund you are helping yourself in time of future sickness.

Due to the recent Carpenters' strike and the unsettled condition that existed throughout the construction industry last month, it has become necessary that our

MOUNTAIN WORK IS IMPROVING

By H. L. SPENCE, Business Representative

J. A. McNeal has started their job for Anaconda Copper Co. at Yerington, Nevada. I sent Brother "Doc" Selvidge and Mensen Henry down on a couple of Dozers. Bill Masterson is the Super. Lester Kelly is the project manager for J. A. McNeal. It's going to be a good job when they get organized and started.

Peter Kiewit and Sons will be starting on the Fallon Air Base in a short time. That will be a good job for some of the Dear Brothers in Nevada.

Andy Drum has about forty miles of "Hot Stuff" to lay between Fernley and Lovelock, Nevada. However, he is well along with the job and will be finished on schedule. Some of Drum's crew may be going up to the Lake Tahoe job. They will have a vacation along with their work this summer, especially Leonard Miller and Joe Solaegui.

Isbell Construction Co. has just about completed the road into the Sulphur Mine in Alpine County, in California, and will start stripping in the near future. Brother Frank Jakowatz is in charge of the HDRM work. Brother O. J. Murphy and Bert Charley are running the shovels. Isbell's four lane highway job between Sparks and Vista, Nevada, is still shut down. Still too much water. However, they are doing a bit of work around Reno. The Hot Plant is going, and the paving crew is in high gear. But you have to stay in high gear to work for Al Shay and Buck Piretto, for they are a couple of go-ahead foremen.

The Dear Brothers have most of the dirt moved on Isbell's highway job at Whitehorse Pass. But that can be expected with a couple of new foremen like Brother Randy Booth and Clarence Wibel. Those two boys really get the job done in short order.

Brother Carl Haas has moved Wells Cargo's road building outfit back in on the Austin to Battle Mountain, Nevada, highway job last Monday. Brother Glen E. Merriman is on the cat and Brother Dutch E. Dowler is on the blade.

Dodge Construction Company's Iron Are job at Lovelock, Nevada, is going along in fine shape. Bro. George Thompson is keeping the Hall Road up in fine shape with the blade. Brother Perry Thomsen is doing some fancy dozing around the shovel and the pit. Brother A. J. Harrison is trying to keep the bolts tight around the outfit with the help of Brother William Ayers. Brother James Sigler has a tough go loading lots of trucks from the stock pile. Brother Shoffner is on a cat. Frank Dunn keeps him farmed out to American Ore and to the ranchers. But Frank has his eye on Shoffner most of the time, but I guess he has to in order to get much work out of that fellow.

Harms Brothers have started on their job near Woodford, Calif., on Highway No. 89. Brother Bert Roark and E. H. Boyett are on the cats. It's a bit rocky but that's the way the boys like it. Brother Stone is the grade foreman to keep the boys in line.

Brother Les Jacobsen has a one-man highway job out on George Schilling's job on the Kietske Lane

out-of-work list be brought up to date. Many of the brothers who registered while the strike was on have been called back to work and some forgot to notify us so their names might be removed. Between now and June 30 we will re-register all the brothers who still are out of work and notify us to that effect. Any of the brothers who now appear on our out-of-work list and do not notify us before June 30, we will assume to be working.

Remember that our office is open each Thursday evening from 7 to 9 for your convenience.

Married Women Working

Washington (LPA)—In April of 1944 married women working numbered 8,400,000, or 25.6 per cent. The number dropped sharply at the end of World War II, then began climbing again, until by April of last year the number was 10,200,000, or 26.7 per cent—more than at the wartime peak. The upward trend has continued since, says the Census Bureau.

The Bureau reported that 50 per cent of all single women and 36 per cent of the divorcees and widows were on the nation's payrolls last spring.

cut-off. But he is getting the work done.

Brother Vero Hunsaker has a tough job out at Simplots Iron Ore job, but he has the pit benched off in good shape now, and the going won't be so tough for a while.

O. C. JONES & SONS
GENERAL CONTRACTORS
Cedar and 4th St. BERKELEY
Landscape 6-3424
Member A. G. C.

Weak, dividend unions are the bosses' desire. Strong, united labor is the workers' only hope for a better life.

J. R. Feeney
Wire - Rope
Splicing and Socketing
Agents for
Roebblings Blue Center
All Work Made to Order
Guaranteed and Insured
600 Addison Street
Berkeley, Calif.
Telephone Ashberry 3-8288

Ben C. Gerwick Inc.
Engineering Construction
Wharves - Piers - Bridges
Terminals - Foundations
Submarine Work
112 Market Street
San Francisco 11
Phone SUTter 1-7104

RANSOME COMPANY
Construction and Butane Engineers
Member of A.G.C.
4030 Hollis Street OLYmpic 2-3600 Emeryville 8, Calif.


PARISH BROS.
General Contractors — Highway and Public Works
PHONE 330 P. O. BOX 6 BENICIA, CALIF.

GARFIELD & CO.
Power Shovels -- Cranes -- Draglines
Locomotives
1232 HEARST BLDG. Phone SUTter 1-1036 SAN FRANCISCO, 3

HERRICK IRON WORKS
18th & Campbell OAKLAND Glencourt 1-1767

STOLTE, Inc.
General Contractors
TRinidad 2-1064 8451 San Leandro St.
Oakland 3, California

PART OF THE PACKAGE



PARTS shipped the same day is not unusual when you buy from BACON.

Fast parts service is part of the Sales-Service-Parts package when you buy your equipment from ERBCO.

GET IT FROM EDWARD R. BACON COMPANY
CONSTRUCTION EQUIPMENT
FOLSOM STREET AT 17th • SAN FRANCISCO 10, CALIFORNIA • HEmlock 1-3704
SACRAMENTO OAKLAND FRESNO STOCKTON
REDDING UKIAH VISALIA

