

New 3-Year Agreement Gets O.K. in No. Calif.

Pact's Section On Wage Rates

SECTION NO. 3 — GROUP WAGE RATES

On all work performed, regardless of when said work was bid or let, the wage scales and classifications shall be as follows:

CLASSIFICATIONS	Effective Dates:				
	June 15 1962	Sept. 15 1962	June 15 1963	Sept. 15 1963	June 15 1964

Group No. 1

Indentured Apprentices.

1st six months	70% of Group 7A Wages				
2nd six months	75% of Group 7A Wages				
3rd six months	80% of classification to which assigned				
4th six months	85% of classification to which assigned				
5th six months	90% of classification to which assigned				
6th six months	95% of classification to which assigned				

Group No. 1A	\$3.66	\$3.71	\$3.83*	\$3.88	\$4.05*
--------------	--------	--------	---------	--------	---------

Assistant to Engineer (fireman, oiler, Note (1) signalman, switchman, brakeman, deckhand, tar pot fireman, heavy duty repairman helper). Partsman (heavy duty repair shop parts room when needed). Note (4) Rear Chainman.

Group No. 2	\$3.80	\$3.85	\$3.98*	\$4.03	\$4.21*
-------------	--------	--------	---------	--------	---------

Mechanical conveyor (handling building materials). Note (2) compressor. Concrete mixer (up to 1 yard). Conveyor Belt Operator (tunnel). Fireman Hot Plant. Mixer box operator (concrete plant). Note (2) Pump Operator. Tar Pot fireman (power agitated). Hydraulic monitor. Spreader boxman (with screeds).

Group No. 3	\$3.90	\$3.95	\$4.08*	\$4.13	\$4.31*
-------------	--------	--------	---------	--------	---------

Boxman (asphalt plant) (moves to Group 4—June 15, 1963). Box Operator (Bunker). Note (4) Head Chainman, Rodman, Gradesetter. Locomotive (Assistant to Engineer required). Motorman. Ross Carrier (const. jobsite). Screedman. Self-propelled, automatically applied concrete curing machine (on streets, highways, airports and canals).

Group No. 4	\$4.14	\$4.19	\$4.33*	\$4.38	\$4.57*
-------------	--------	--------	---------	--------	---------

Boxman (asphalt plant) effective June 15, 1963. Note (4) Gradesetter, Grade checker (mechanical or otherwise) (dams, highways and canals). Fork lift or lumber stacker (const. jobsite). Material Hoist (1 drum). Scoopmobile (when used as hoist). Schuttlercar. Towermobile.

Group No. 5	\$4.23	\$4.28	\$4.43*	\$4.48	\$4.68*
-------------	--------	--------	---------	--------	---------

Note (3) Compressors (2 to 6). Concrete Mixers (over 1 yard). Concrete pumps or pumpcrete guns. Generators, gasoline or diesel driven (100 k.w.). Note (3) pumps (2 to 6). Note (3) Welding machines (gasoline or diesel) (2 to 8).

Group No. 6	\$4.28	\$4.33	\$4.48*	\$4.53	\$4.73*
-------------	--------	--------	---------	--------	---------

Asphalt Plant Engineer (moves to Group 7—June 15, 1963). Boom Truck or dual purpose A frame truck. Concrete Batch Plants (wet or dry). Concrete saws (self propelled unit on streets, highways, airports and canals). Drilling machinery (not to apply to waterlines, wagon drills or jackhammers) (Assistant to Engineer required). Highline cableway signalman. Locomotives (steam or over 30 ton) (Assistant to Engineer required). Mechanical finishers (concrete) (Clary, Johnson, or similar types). Mechanical finishers or spreader machine (asphalt) (Barber Greene and similar) (screedman required). Maginnis internal full slab vibrator (on airports, highways, canals and warehouses). Power jumbo operator (setting slip forms, etc., in tunnels). Portable crushers. Roller or self-propelled compactor. Surface heater. Self-propelled pipeline, wrapping machine (Perault, CRC or similar types). Slip form pumps (power driven hydraulic lifting device or concrete forms). Small rubber tired tractors.

Group No. 7	\$4.34	\$4.39	\$4.55*	\$4.60	\$4.81*
-------------	--------	--------	---------	--------	---------

Asphalt Plant Engineer, effective June 15, 1963. Deck Engineers. Dual Drum mixer (Assistant to Engineer required). Fuller Kenyon pump and similar types. Handi-crane (Assistant to Engineer required, except on 10 ton capacity or less). Note (4) Instrument man. Material hoist (2 or more drums). Mine or shaft hoist. Mixermobile. Pavement breaker. Pavement breaker with compressor combination. Pavement

—Continued on Page 2

By AL CLEM

During the past two months, it has been extremely busy and you might say trying at times. The series of negotiating meetings held between the various crafts and the employers overshadowed most of the other activities in our Local Union.

Your negotiating committee, which consisted of officers and District Representatives of Local 3 and three representatives on special assignment, attended several sessions which lasted far into the morning. After 16 official meetings (and many unofficial meetings) we finally arrived at a contract which we thought would be agreeable to our members.

As many of you know, the contract was approved in a series of 10 meetings held throughout California. As expected, the turnout at these meetings was extremely heavy. Needless to say, all those in attendance were interested in the contract by which they will be working for the next three years, and with the overwhelming vote by which it was ratified, we now feel confident that we have achieved the goal for which we set our sights prior to the beginning of negotiations.

The first meeting was held with the Employers on May 7, at a time when there was a strike in the industry as well as a shutdown. In spite of this, your negotiating committee was able to continue and take the lead in arriving at an agreement to present to the membership, which had some bearing on opening up the construction industry for settlements at an earlier date.

NEW DATE

The fact that the effective date of the contract was set back 15 days prior to the expiration of the old agreement is indicative that when the parties sit down to engage in serious collective bargaining that an agreement may be reached which is satisfactory to all. I am sure it can be said without fear of contradiction that the proposed contract as approved at this early date prior to the expiration of the old agreement in spite of a strike and lockout was due to the fact that Local 3, its members and officers have the respect of the contractors and the construction industry. They know that the membership only asks for and expects a decent wage for a productive day's work.

Due to the increased productivity of the individual members, handling larger and faster machinery, the Employers were aware and we are cognizant of the fact that the members of our Union are entitled to the wage rates agreed upon.

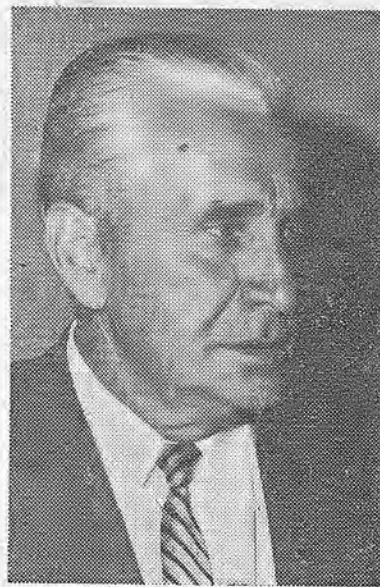
It goes without saying, when in negotiations each side is endeavoring to do what they think is right for the people which they represent. In my opinion, the contract which was ratified, while not containing all the gains which we hoped to achieve for our members, is a good contract and we hope by working together and cooperating with the employers that we can continue to achieve further economic gains for the members of our Union as time goes on so that they and their families may have a fuller life.

BENEFITS

In addition to the wage rates, which you will note are being published in this issue of the

—Continued on Page 2

More Sketches



A. J. (BUCK) HOPE

A. J. (Buck) Hope, financial secretary of Operating Engineers Local 3 since 1960, is an officer with broad experience in the craft and long service to his union.

He was assigned as a business representative working out of the San Jose district office in 1951 and has been the district representative for about nine years.

Brother Hope was named to the Local 3 executive board in 1958.

JOINS UNION

Joining old San Jose Local 842 in 1936, he worked as a catskinner and blade operator and later held supervisory jobs.

He served for three years in the Seabees in the South Pacific during World War II, achieving the rank of chief.

Returning to civilian life, he was a foreman and later advanced to superintendent on major proj-

—Continued on Page 2



AL PERRY

Albert P. (Al) Perry, who serves on the executive board of Operating Engineers Local 3 from District 9 (San Jose), traces his IUOE membership back to 1923.

Perry was born on a ranch near King City, where he attended school, and recalls that "in 1918 I began my many years working for wages."

He was working for Santa Clara County in July, 1923, when he was invited by a group of engineers to attend a meeting of Operating Engineers Local 842 in San Jose.

MEMBERSHIP

"After passing a stiff examination, paying the initiation fee and the amount of dues required, I came home that night with a card," he says.

Soon afterward, Perry went to work for a small contractor. "He had a Keystone skimmer steam

—Continued on Page 3

More on Wage Rates in No. Calif.

Continued from Page 1—
breaker, truck mounted with compressor combination (oiler-driver required). Pipe cleaning machine (tractor propelled and supported). Pipe wrapping machine (tractor propelled and supported). Pipe bending machine (pipe lines only). Pugmills. Refrigeration Plant. Scoopmobile (used as a loader). Self-propelled elevating grade plane. Soil Tester. Small rubber-tired trenching machine and similar small equipment (any assistance in the operation if needed shall be performed by an Employee). Trenching Machine (oiler required except as provided above). Truck type loader. Small tractor (with boom).

Group No. 7A \$4.41 \$4.46 \$4.64* \$4.69 \$4.92*

Heavy Duty Repairman and/or Welders. Tractors, dozers, scrapers, sheep foot, compacting equipment and push cats.

Group No. 8 \$4.52 \$4.57 \$4.73* \$4.78 \$4.99*

Combination slusher and motor operator. Concrete batch plant (multiple units). Mucking machine (oiler when required). Loader (up to 2 yards). Euclids, T pulls, DW-10, 20 and 21 (up to and including 45 cy., "struck," m.r.c.). Portable crushing and screening plants (oiler required).

Group No. 9 \$4.61 \$4.66 \$4.83* \$4.88 \$5.10*

Combination mixer and compressor (gunite). Heavy duty rotary drill rigs (inc. caisson and foundation work) (Assistant to Engineer required). Kolman Loader. Tractor (with boom) D-6 or larger, and similar. Chicago Boom. Power Blade Operator.

Group No. 10 \$4.71 \$4.76 \$4.93* \$4.98 \$5.20*

Boom type backfilling machine (Assistant to Engineer required). Bridge Crane. Note (4) Chief of Party. Combination Backhoe and Loader (to and including 3/8 yard) (oiler required when more than 200 degree swing). Euclid loader and similar types (Assistant to Engineer required). Euclids, T pulls, DW 20, 21 and similar over 45 cy., "struck," m.r.c. Highline cableway (signalman required). Derricks (2 operators required when swing engine remote from hoist). Derrick barges (except excavation work) (deck engineer and Assistant to Engineer required). Do-Mor Loader and Adams Elegrader. Lift slab machine (Vagtborge and similar types). Multiple engine earth-moving machine (Euclids, etc.). (No tandem scraper). Power shovels, cranes (not over 25 tons, hammerhead and gantry), clamshells, drag lines, backhoes, grade-alls (up to and including 1 yard) (Assistant to Engineer required). Soil stabilizer (P & H or equal). Loader (2 yards and over). Koehring Skooter (or similar) (oiler required). Tractor, compressor drill comb. (Assistant to Engineer required). Earth moving machine (single engine with tandem scrapers). Sub grader (Gurries or other automatic type) (Oiler required). Pre-stress wire wrapping machine.

Group No. 11 \$4.84 \$4.89 \$5.06* \$5.11 \$5.33*

Power shovels, cranes (over 25 tons), clamshells, draglines, backhoes, grade alls, (over 1 yard) (oiler required) (2 oilers required on 120 B similar or larger). DW 20 (tandem scrapers). Automatic asphalt or concrete slip form paver (two screedmen and one grade-setter required). Slip form paver, concrete or asphalt (1 operator and 2 screedmen required). Earth moving machines, multiple propulsion power units and two scrapers. Self propelled compactor with multiple propulsion power units. Universal Liebherr and tower cranes (and similar types) (In the erection, dismantling, and moving of equipment, there shall be an additional Operating Engineer).

*Two and one-half (2½¢) cents per hour or a portion of such amount may at the option of the Union be applied to Health and Welfare, Pension, or Vacations. If all or any portion is so applied, the wage rate per hour will be reduced by that much as will all subsequent wage rates.

SECTION No. 3 (Second Part)

Notes 1-2-3-4: See Below.

(a) Operators and Oilers on cranes with booms of eighty (80) feet or more, including jib and on drag lines using bucket of four (4) cubic yards or over with boom of eighty (80) feet or more, including jib, shall receive 15 cents per hour premium additional to their regular rate of pay.

An Operating Engineer shall maintain and service gasoline or diesel driven welding machines when the welding is being performed by another craft.

(b) When the Individual Employer performs work within the scope of the collective bargaining agreements between the Union and the Pile Driving Contractors Association, or between the Union and the Steel Fabricators and Erectors Council, Employees shall receive the wage scale and working conditions provided in whichever of such Agreements applies to the work, except for the provisions concerning Health and Welfare, Pensions Vacations and Journeyman and Apprentice Training. This provision shall apply only to agreements between the Union and the Pile Driving Contractors Association and the Steel Fabricators and Erectors Council.

Except as otherwise provided in paragraph (b) set out above, when Operating Engineers are employed to service a Specialty

Craft or crafts, with hoisting equipment, compressors or welders or any of them (Material hoists, house elevators excluded, except when servicing Specialty Craft 75 per cent of the time) they shall receive the wage scale and working conditions, including travel time and subsistence, of the Specialty Craft or crafts (welfare, pensions, vacations of Specialty Craft or crafts payments excluded), if such wage scale and working conditions, including travel time and subsistence when added together, are in excess of the provisions contained in this Agreement. Assistants to Engineers are excluded from the wage provisions but are entitled to all other working conditions of the Specialty Craft or crafts (welfare, pensions, vacations of Specialty Craft or crafts payments excluded). Regular employees on a particular project and assigned to work with a Specialty Craft or crafts temporarily shall not be entitled to any of the conditions of the Specialty Craft or crafts. Temporarily shall be interpreted as meaning any work performed in a single day of four hours or less.

Combination mixer and compressor operator on gunite work shall be classed as servicing a Specialty Craft.

On any job, location or project located more than 25 miles from the permanent yard of the Indi-

vidual Employer, Operating Engineers employed by an Individual Employer who is regularly engaged in the business of renting cranes, truck cranes, hoisting equipment, grade-alls, truck mounted pavement breakers, or truck mounted earth augers, on a fully operated basis, shall receive in addition to their regular and overtime wages six (\$6.00) dollars per work day for subsistence. Within thirty (30) days of the execution of this Agreement any such Individual Employer having more than one yard shall notify the Union, in writing, of the location of his permanent yard, or permanent yards. Such locations can be changed once each year by giving written notice to the Union.

(c) Employees working in tunnels or adits, shall receive \$0.12½ per hour over and above the regular rate. Employees working within shafts, stopes, and raises shall receive \$0.25 per hour over and above the regular rate. The hours of employment of such Employee shall commence at the portal of the tunnel, adit or shaft at which he is directed by the Individual Employer to report for work on his shift and shall end at such portal.

Underground differential shall apply for the full shift to any Employee performing work underground. Except as specially provided, all other terms and conditions of employment in underground work shall be as otherwise established in this Agreement.

(e) An Employee who works in more than one classification or on more than one kind of work or kind of equipment during a shift shall have his pay computed on the basis of the highest rate applicable to him for the full shift and any overtime immediately preceding or following such shift.

(f) The straight time rate shall be the highest rate applicable to the work, equipment, and classification.

Note (1): The necessity for the use of a workman as a "signalman" shall be determined by the Individual Employer, but when used, he shall be an Assistant to Engineer as defined in this Agreement, who assists in giving or relaying signals by mechanical or electrical means (also by means of hand signals on excavation work) directly to the operator of hoisting equipment only.

Note (2) (3): When the number of compressors (excluding compressor house), pumps and welding machines or any combination thereof operated, serviced and maintained or any of them by an Individual Employer exceeds six (6) then an additional Employee shall be employed in accordance with the Hiring Regulations and the manning provisions of this Agreement.

Note (2) (3): In the event the Individual Employer uses gasoline, diesel or electric powered pumps, these classifications shall apply without change. However, where no Employee is operating, servicing, maintaining, or repairing equipment in the classifications covered by this Agreement on a project and there is a single automatic electric pump with a maximum rated capacity of 500 G.P.M. or less running on such project, no Employee covered by this Agreement need be employed by reason of the operation of such pump. Where there is an Employee employed to operate, service, maintain or repair equip-

ment in the classifications covered by this Agreement on such project, then such Employee shall start, stop, service and maintain such single automatic electric pump before and after his regular shift at the applicable overtime rate.

Note (4): The classifications herein referred to shall apply only to Employees covered hereby, regularly employed in field survey work, excluding Individual Employer, executive, administrative or supervisory personnel, professional or office engineering personnel, draftsmen, estimators, timekeepers, messenger boys, guards, clerical help or field office help, and excluding the use of survey instruments normally used by any other employees in the performance of their duties.

Field survey work shall be that work performed by such Employees in connection with the establishment of control points governing construction operations when performed by the Individual Employer on any type of home, office or commercial building construction. "Control points governing construction operations" shall be defined as such vertical and horizontal controls as must be established in connection with site preparation work before actual construction can get under way. On commercial, office, or multi-storied buildings, site preparation work in connection with the establishment of control points governing construction operations on locations and elevations of fills, excavations, piles, caissons, and utilities shall be considered to be field survey work.

On all types of heavy, highway and engineering construction, when the Individual Employer is required by contracting authority to furnish own field survey service or when the Individual Employer at his own discretion hires Employees to perform field survey work, then in such instances, such work shall come within the classifications herein mentioned.

When an Instrument man is required by the Individual Employer to work from drawings, plans or specifications without the direct supervision of a party chief he shall be paid at the Chief of Party rate.

An Employee performing field survey work, who is required to work suspended by ropes, shall receive a 12½ cents per hour premium additional to the regular rate of pay.

When a Grade-setter is required by the Individual Employer to work from drawings, plans or specifications, he shall be paid at the Instrument man rate.

For any field survey work beyond the direct control of the Individual Employers, the referred to classifications and conditions shall not apply.

The Union will cooperate with the Individual Employer in the placing of student engineering trainees, so long as it does not materially affect the normal employment of regular Employees.

This Agreement does not cover inspectors.

Blood Donors

Blood donors for the Sacramento area include: Alonzo R. Allen, Mrs. Opal J. Allen, Robert Baer, Howard Baxter, Bruce Cavana, A. V. Carpenter, Daniel Clancy, Ted W. Cox, Lewis Dugan, Mrs. Evelyn Hays, Joe Kortuem, Edward McQuillan, Mrs. Gladys E. Stewart, Ervin Trimble and Ray H. Wymore.

Agreement Rundown Continued

Continued from Page 1—

Engineers News, there were gains in the fringe benefits.

Effective immediately, Employers are to pay one-half cent an hour into the new Journeyman and Apprentice Training Fund for Operating Engineers. This amount will be raised to one cent for each hour worked by each employee commencing June 15, 1963.

Payments to the Operating Engineers Health and Welfare Fund, Construction Division, were raised from 10 cents an hour to 14½ cents.

On June 15, 1963, Pension Trust Fund contributions will be raised from the present 10 cents for each hour worked to 15 cents, and beginning on September 15 of this year, the Employer is to pay one-half cent into a Pensioned Operating Engineers' Health and Welfare Fund. This will be increased to one cent for each hour worked by each Employee starting June 15, 1963. The purpose is "To provide health and welfare benefits for pensioners under the Pension Trust Fund for Operating Engineers, and, if possible in the opinion of the Trustees, their dependents."

We were able to secure considerable improvement in the Foreman Agreement as well.

BOOK FORM

As soon as possible, the agreement will be printed in book form to be distributed to the Local 3 membership.

Any member who wishes the Local Union to represent him in State Department of Employment unemployment insurance appeal hearings must obtain an authorization form from his local Department of Employment office. These are filed with the Department in advance of a hearing.

Notification

All Local 3 members called back to work by their employers with the end of the Northern California construction shutdown are requested to notify the dispatch offices with which they have been registered. This is so their names may be scratched from the out-of-work list.

Sketch On A. J. Hope

Continued from Page 1—
ects. He became a business representative in the San Jose area in April of 1951.

COUNCIL

Buck is a member of the Santa Clara County Building Trades Council executive board.

He was appointed Local 3 financial secretary by Regional Director Newell J. Carman, then local supervisor, in July, 1960. He was elected to the office in the balloting preceding the restoration of local autonomy 18 months ago.

Hope makes his home at Los Altos. He and his wife, Frances, have a son, Jim, and a daughter, Marie.

Award Dinner For New Chiefs of Party

Tech. Engineer Group Gets Certificates

The first technical engineers to be certified as Chiefs of Party under the Northern California Surveyors Joint Apprenticeship program were honored by the joint committee at a banquet June 15 at the Adobe Creek Country Club, Los Altos.

There are 37 in the newly-certified group.

Honored guests attended the banquet with their wives. The highlight of the evening was the presentation of certificates to the members of Operating Engineers Local 3. Speakers cited their important role in the developing program.

ADDRESS

"You are the first to be selected and certified as Chiefs of Party," said Gilbert Davidson, who was appointed consultant to the J. A. C. at its inception by Charles Hanna, chief of the State Division of Apprenticeship Standards.

"You, as the first Chiefs of Party, have a very important job to perform," the consultant continued in the principal address at the banquet.

"You will be responsible for the apprentice's rotation through the various work processes needed to qualify him as Chief of Party. Yours is the biggest single responsibility in the apprenticeship program. It is the key to the success of it."

SUPERVISION

"Proper supervision and instruction on the job by competent personnel during the four years of apprenticeship, coupled with counseling and guidance pointing out to the apprentice the need and importance of related instruction to insure a rounded-out apprenticeship, is your responsibility."

Davidson told the assembled labor and management representatives and guests:

"I am proud to have had the opportunity to work with representatives of the Bay Counties Civil Engineers and Land Surveyors Association and the Operating Engineers Local No. 3, responsible for this program."

PROGRESS

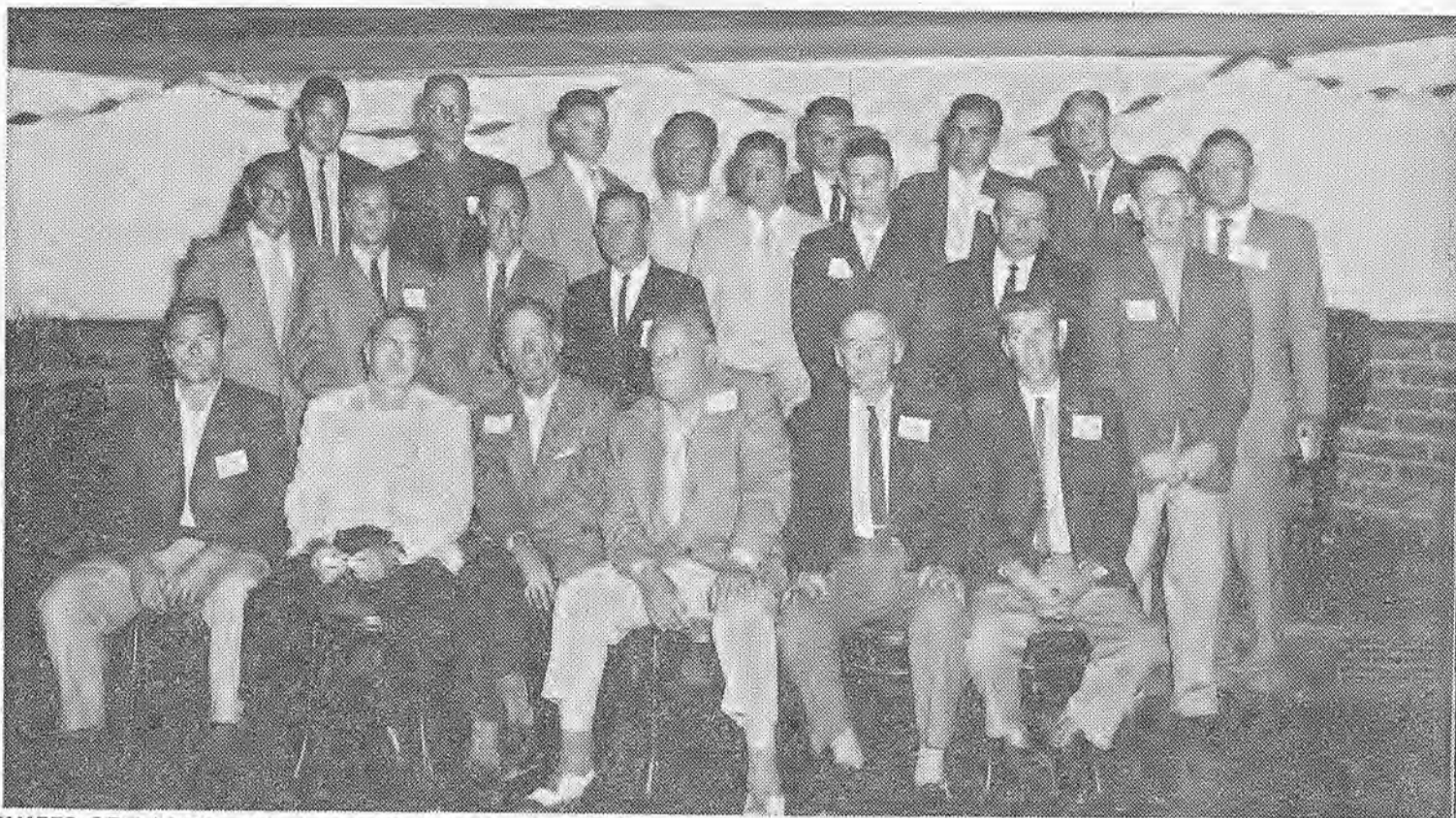
"You are to be congratulated for making so much progress in such a short time. You and your newly-certified Chiefs of Party, working together, now have the opportunity to build this program into the best in the State of California."

Apprenticeship standards for the joint program were approved in September of last year.

Park L. Verner of San Jose, president of the Bay Counties association, also spoke at the banquet, commenting on the history of the union and management organizations and the opportunity to work together for the common good of the profession.

PRESENTATION

Certificates were presented to the new Chiefs of Party by Charles Savio and Art Pennebaker.



CHIEFS OF PARTY—Newly-certified chiefs of party honored at a banquet program June 15 are shown in this photo, along with their Local 3 representatives. They are the first technical engineers certified by the Northern California Surveyors Joint Apprenticeship Committee.



J. A. C. MEMBERS—Pictured here are members of the Northern California joint committee and sub-committees who attended the banquet. They're charged with evaluating, training and certifying technical engineers in the apprenticeship program.

baker, chairman and co-chairman of the J. A. C.

Each of those honored received a wallet-sized plasticized identification card as well as his certificate. Special commendation went to Mike Giuli for his exceptional test score and evaluation.

The certificates were awarded on the basis of an eight-hour written test and personal evaluation by a labor-management committee.

More than 160 applicants are to be tested July 7 in the surveyors joint apprenticeship program.

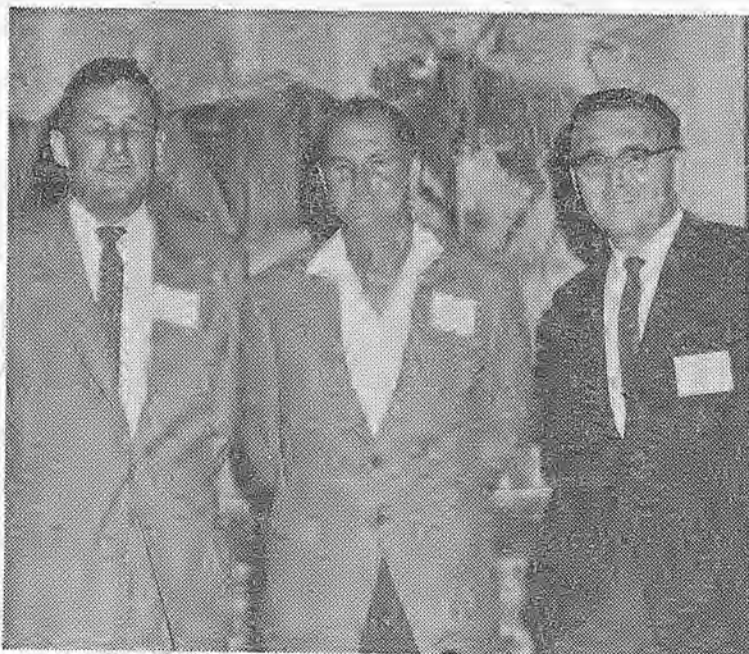
Sketch On Al Perry

Continued from Page 1—

shovel," recalls Perry, "and it was not long before I had to get a hog-head's card and become an operator." Later, Perry went to work for San Jose Paving and then for the Peninsula Paving Company. His longest hitch was with the Union Paving Company. He spent 23½ years with the company — more than 18 years as a foreman.

OFFICES

Work with J. C. Bateman and Pisano Bros. followed. In the early '30s, Perry served as vice



PARTICIPANTS—Certificates were presented to the new chiefs of party by Charles Savio (right) and Art Pennebaker (left), chairman and co-chairman of the joint apprenticeship committee. With them is Park Verner, president of Bay counties association.

president and as president of Local 842, which was among the locals which later merged into Local 3.

"You brothers will never know how much the International Union of Operating Engineers has meant to me," says Perry. "I have fed, clothed, housed, and educated a family of seven."

His Local 3 contributions have included help in writing the new by-laws and grievance committee service. He was elected to the Union Executive Board in December, 1960.

Perry lives in Santa Clara with his wife, Violet; three daughters, Carolyn, Angele and Marie, and two sons, John and George.

First to Be Certified

Local 3's officers and executive board members are especially proud of these 37 Chiefs of Party who were selected by the joint labor-management apprenticeship committee to be honored at the recent certification ceremonies:

David K. Ahern, Richard M. Arnold, Richard C. Barrett, William A. Bartlett, James L. Beaty, Robert S. Berini, Harvey F. Blomquist, Robert L. Bodiford Jr., Gorman Booth, David E. Bourne, Charles H. Burritt, Howard R. Curry, David George Davis.

Wilbur Howard Evans, Robert W. Foulk, William E. Foy III, Mike Giuli, William S. Hanna Jr., Robison A. Hill, Robert C. Humann, Theron C. Irving, Merle Kehn.

Donald C. Long, Andrew J. McMahon, Albert M. Norman, Herbert S. Reed Jr., Alfred H. Riboni, Bruce I. Rider, Bernarr B. Shaw, Owen H. Snyder.

Frank H. Southworth, Paul W. Sweeney, Roger H. Taylor, Ted N. Taylor, Ronald Terry, Sam C. Uhler and Robert A. Wickham.

H and W Coverage

An estimated 91 per cent of all California workers under union agreements are now covered by negotiated health and welfare plans providing some hospital, surgical or other medical care benefits, according to the latest report issued by the State Division of Labor Statistics and Research compiled from contracts on file in June, 1961.

This compares with 85 per cent coverage in May 1959, two years earlier.

The Division's health and welfare report is based on a survey of 1,657 collective bargaining agreements covering an estimated 1,438,000 California workers. Health and welfare provisions were found in 1,420 agreements covering 1,303,000 workers.

ENGINEERS NEWS

Published monthly by Local Union No. 3 of the International Union of Operating Engineers, 474 Valencia St., San Francisco 3, Calif. Second class postage paid at San Francisco, Calif.

Top Officers at Local 3 Board Meeting



BOARD MEETING—I. U. O. E. General Secretary-Treasurer Hunter P. Wharton and Regional Director and International Vice President Newell J. Carman attended a June 24 meeting of the Executive Board of Operating Engineers Local 3. They're seated here third and second from right.

Plea To I.L.O.

American labor called on the International Labor Organization to broaden its assistance to trade unions for the development of educational programs for workers.

The call was made last month in a nine-point resolution placed before the ILO's 48th annual conference at Geneva by Rudy Faupl, Machinists' international representative and U. S. worker delegate.

"Workers' education is essential for promoting social progress and the operation of democratic institutions," the resolution said.

While recognizing efforts already made by the ILO, the appeal urged intensification of the work being done. The need is particularly great, the resolution said, because of the growth of the trade union movement in the newly-developing countries.



PRESENTATION—Here Brother Wharton (left) receives a woodcarving incorporating the I. U. O. E. emblem and construction equipment. Local 3 Business Manager Al Clem made the presentation.

The Executive Board of Operating Engineers Local 3 held a special meeting in San Francisco on June 24.

Hunter P. Wharton, general secretary-treasurer of the International Union of Operating Engineers, and Newell J. Carman, international vice president and regional director, attended the session.

The executive board met to review and make recommendations concerning resolutions submitted for consideration at the semi-annual meeting of Local 3 to be held in San Francisco July 14.

Brother Wharton was in San Francisco to make arrangements for the international convention of the I.U.O.E., to be held at San Francisco in April, 1964.

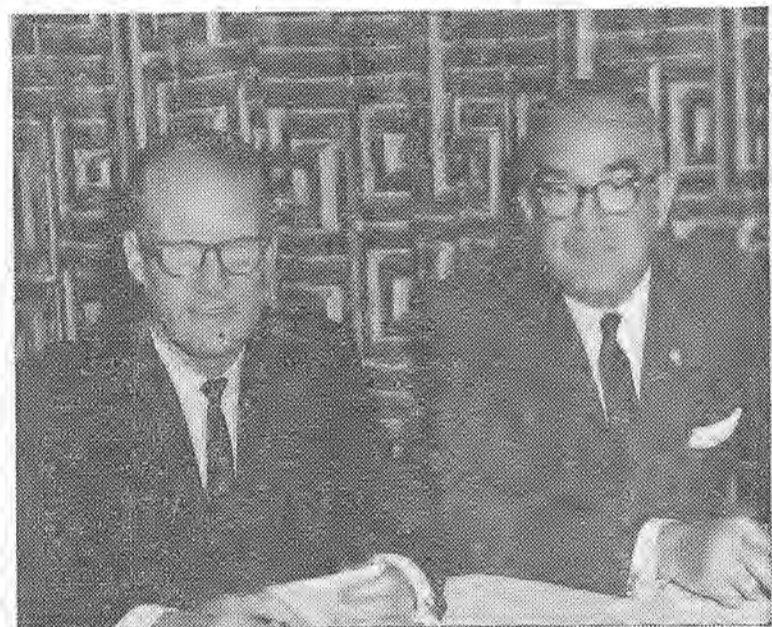
His visit was marked by the presentation of a woodcarving incorporating the I.U.O.E. interna-

tional emblem and construction equipment. The plaque was made by a Formosan at the request of a Local 3 member working in the Far East.

Al Clem, business manager of Local 3, presented the woodcarving to Wharton.

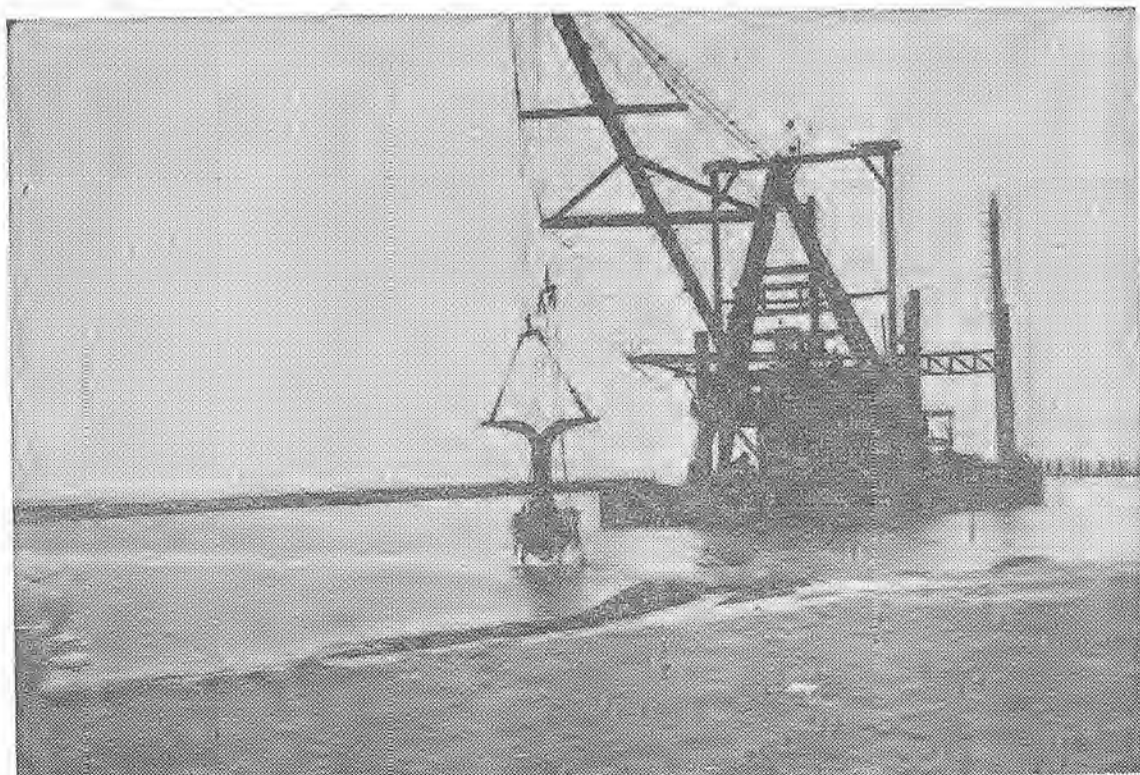
Both Brother Wharton and Brother Carman spoke at the meeting. Brother Wharton discussed labor's problems in recent construction industry negotiations and international union and local efforts in the field of safety.

Brother Carman gave a short report on the activities of his regional office. He also gave some of the background of what caused the Laborers' strike and commended the negotiating committee of Local No. 3 for taking the leadership in negotiating a good agreement.



OFFICERS—Both Brother Carman (left) and Brother Wharton spoke at the San Francisco meeting of the Local 3 Executive Board.

She's Called The Monarch



IN ACTION—The Olympia Dredging Company's dredge, the Monarch, at South San Francisco Yacht Harbor. Andy Micek is captain, Joe Brown is leverman and Walter Wise, deckhand. The Monarch was built by the Monarch Dredging Company about 1916. She has a wooden bottom that's still in perfect shape, steel sides and deck, 216-foot boom that handles a 5½-yard bucket, 70-foot spreads. Hull is 140 by 62 feet. Brothers are here for short-time job.

Cochran & Celli

Recap for Economy



DON'T TAKE CHANCES WITH SMOOTH TIRES!

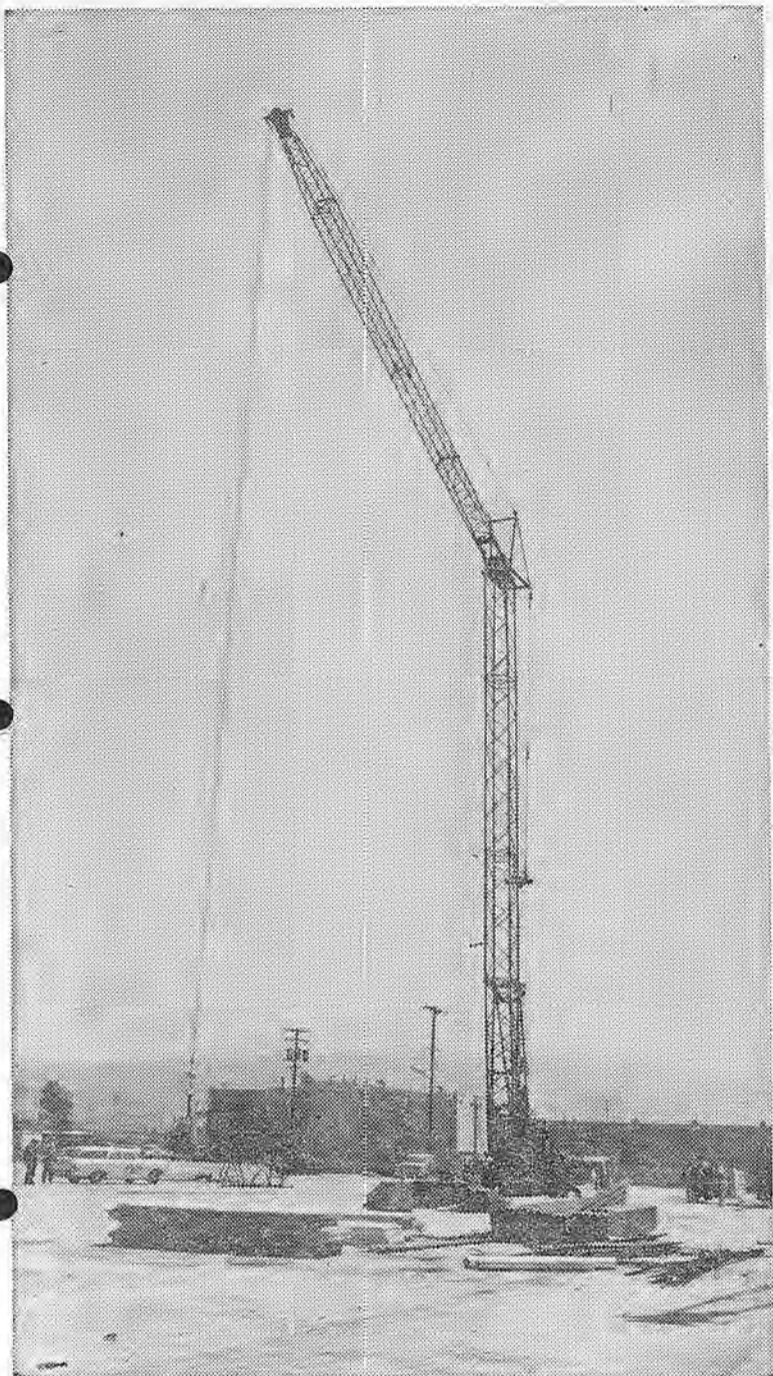
we use... **VOIT**
America's Finest Retreading Rubber

2344 E. 12th Street

KE 2-6323

Oakland

A New Rig In Oakland Area



This Lorain Moto-Tower crane, featuring a 103-foot tower with a 97-foot boom, is on the Perini job at the Safeway Distribution Center in Richmond.

Owned by the Rosendahl Corporation, it's the first of its kind to be used on a project in Northern California.

The crane's operator is Stan Garber of Castro Valley, a 21-year member of Operating Engineers Local 3. Mac McKinney is the oiler.

The crane is mounted on a 50-ton Lorain moto-carrier. Both units are Diesel-powered.

Loads of 5,400 pounds can be handled from 25-foot to 90-foot radius. The machine has a capacity of 30,000 pounds at 30-foot radius with 190 feet of boom.

There are power outriggers which give an overall spread of 18½ feet.

The machine can be converted to a conventional crane for ordinary uses.

There's an overload-indicator which provides both visible and audible signals to warn the operator when rated lifting capacities are reached or exceeded.

With tower up and boom folded, it can be moved easily on job sites.

The Moto-Tower's builders cite its "ability to get closer in and to reach up and over structures (which) reduces working space, eliminates headroom" and places loads at greater reach. It "utilizes the principle of the European tower crane combined with rubber-tire mobility," they declare.

Operator Garber observes:

"In line speed and line pull, it's superior to foreign tower cranes. It also swings faster. It's a rig with a lot of advances."

Vallejo Projects

By AARON SMITH

With the Employer-Laborer dispute still in force, Vallejo area at this writing has very little to report. However, without trying to sound repetitious, work for the area will be good when this dispute is settled. All the major companies are shut down at this writing, but some of the smaller contractors are still operating.

D and D Trenching Co. is putting in the underground for the Jack Newell Trailer Court by the Fairgrounds in Vallejo.

J. R. Armstrong Co. is working at Cement Hills in Fairfield on the Solano Irrigation District project Unit 4-B. This is the only one of several units in the project which is currently operating.

HOUSING

Capehart Housing project at Travis Air Force Base is still working. This is the Gerston Co. job, which has been going for a year. A. D. Stacy is still doing subdivision work in the Fairfield and Vacaville areas.

The Murdoch Co. is doing a small bridge job for the city of Fairfield on Pennsylvania Ave. in Fairfield. Bob Rains has several small jobs working in the Fairfield area. Willamette Dredge in Napa is currently running two shifts on its dredge job from third street in Napa to Horseshoe Bend.

Williams Construction Co. is still working on the subdivision projects at the end of Rollingwood Drive and College Park jobs. Clyde Plymell is still keeping his rigs running on several small jobs in Vallejo.

Drew Ashley is also keeping busy with four engineers.

Parish Bros. are still working in the Goodyear Quarry in Benicia. They are getting materials ready, so as soon as the Laborers settle they will be ready to lay black top on their freeway paving job in Benicia. Parish was also awarded a job at Travis A.F.B. for repair of Taxiway T 25, at a cost of \$475,929. Starting date has not been set.

CONTRACTS

New contracts let:

The Department of Public Works office for the 12th Naval District, for the demineralization of the water system of Berths 7, 8, 9, and 10 and Ways 1 and 2, at Mare Island Naval Shipyard, was let to Monterey Mech. Co. of San Leandro at \$179,826.

Thirty-three and three-tenths miles of existing highways to be surfaced with A/C at various locations in Napa and Solano Counties, let to Riechold and Jurkovich Co. of San Pablo at a cost of \$185,753. This was in addition to the 2.6 miles of surfacing on Imola Ave. and Kelly Road in Napa, which was awarded in May.

Roan Construction Co. of Danville was awarded a small job to modify and extend fuel transfer facilities in area A to C at Travis A.F.B.; cost, \$16,223.

Vaca Construction Co. of Vacaville also was awarded a job at Travis A.F.B. for construction of a degreasing building at \$44,889.

A contract for the construction of water works facilities at Vacaville was awarded to S and Q Construction Co. of South San Francisco. Cost \$471,969.

Oakland Report —Eye on Future

By DON KINCHLOE, L. L. (TINY) LAUX, NORRIS CASEY, FRAN WALKER, and JAMES (RED) IVY

The work in the Southern Alameda County area has been the same as nearly every place else in the northern part of the State.

At this writing most all of the housing projects are shut down and all of the dirt work is down. There are a few small pipeline jobs going and a few contractors are doing cleanup work on their jobs.

The G.M.C. plant is running full blast, though Varwig's crew lost four days when the strike started, but has been on steady since.

The steel erection gangs are going steadily as are the gangs on the underground work. We have approximately 75 Engineers employed for various contractors on the job.

BRIDGE JOB

The San Mateo bridge is still going. Yuba has 10 engineers here.

San Leandro Pipe has had crews working up until now, but they have caught up and have to wait until something else breaks.

There are many jobs shut down now that will require many men when work starts again. Also, many more contracts have been let.

LISTING

Jobs let in Southern Alameda County:

Albay Construction, \$30,920, S.S. Storage Building, Sandia Site, Livermore. Eugene G. Alves Construction Company, Inc., \$85,430, Amador Valley School, Pleasanton.

McGuire & Hester, \$841,000, Alameda County State College, Site Develop.

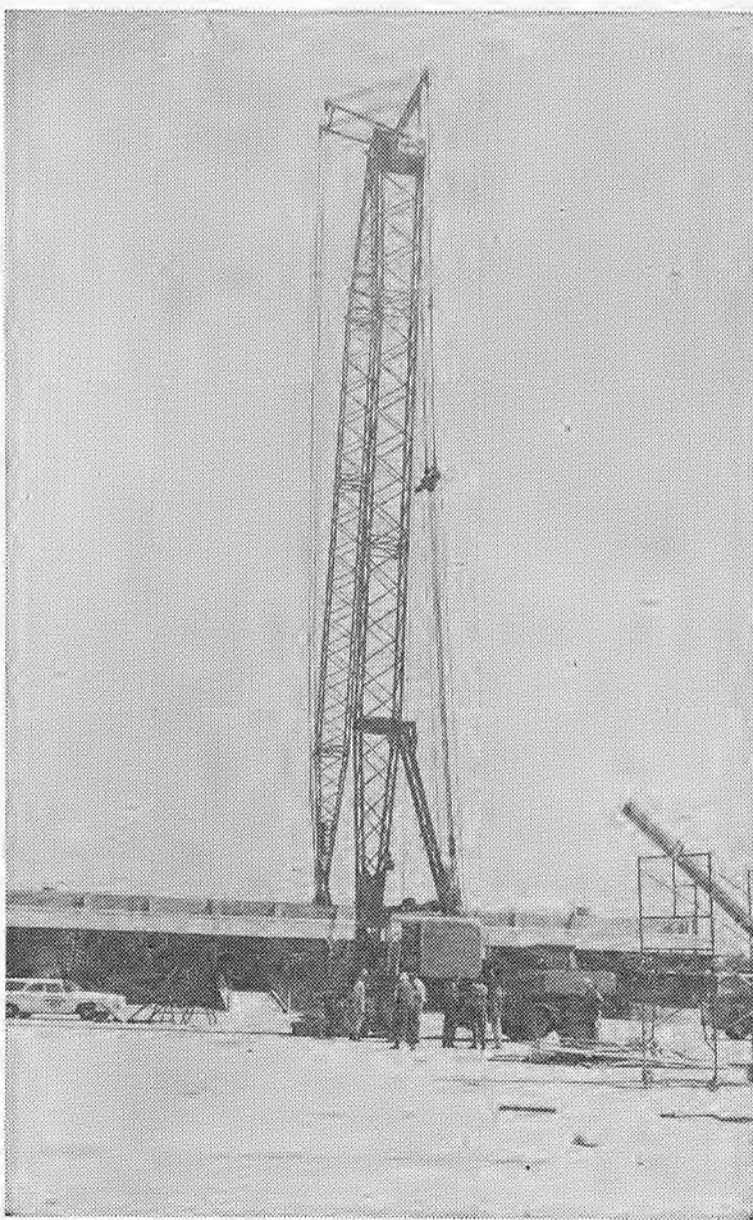
Phase II. McGuire & Hester, \$16,617, Drainage Facilities in San Leandro. M. W. Garing, Oakland, \$87,832, job in Livermore.

Granite Construction, Watsonville, \$247,244, resurfacing 34.3 miles existing highway, various locations in Alameda. M. W. Garing, \$155,977, for Atomic Energy Commission for construction of Increment No. 7, Building No. 102, Livermore. Gilbert Construction Company, \$83,939, Increment No. 2, Building No. 174, Livermore. Oliver DeSilva Co., San Leandro, \$122,657, for the rebuilding of Greenville Road from East Avenue to Tesla Road, Livermore.

DAM JOB

San Jose Amoroso Construction Company, \$244,795, for the construction of Cull Creek Dam in Castro Valley. The dirt work is sub-let to Bob Mulloy Co., of Lafayette.

Galbraith Construction Com-



pany, Newark, \$141,488, for construction of Sewerline on West "A" Street, between Hathaway Ave. & Hesperian Blvd., Hayward.

The bids were opened recently on the 6 miles of canal and pipeline in Livermore. The low bid was submitted by McGuire & Hester for approximately \$1,317,000. This job should start as soon as the shutdown is over.

Bids will be opened July 11 for 5.4 miles of Freeway between Scott's Corner and Fremont. This will be a Freeway over the hills near Mission San Jose. It is estimated there will be some 3,100,000 yards of dirt to be moved.

Rapid Growth

During the 1960s the labor force will grow even faster than the population as a whole, mainly because of the large number of young people who will reach working age in the decade, the U.S. Labor Department points out in its "Occupational Outlook Handbook." From 73½ million in 1960 the labor force is expected to grow, by 1970, to over 87 million, an increase of 13½ million or close to 20 per cent. At the same time, the population will grow only 15 per cent.

State Picture

Vote Results Are Weighed

By A. G. BOARDMAN
Director of Education and Research
California Conference of Operating Engineers

Labor did well by its candidates in the recent California primary elections, but not so well by the School Construction Bonds and the Park and Recreation Program.

Also, we were disappointed with the results of the vote on the Home for the Aged measure. These three measures on the ballot were of great importance to the construction industry and the Operating Engineers. If passed, they would have added many thousands of hours to the future work load of the crafts in the construction industry.

They failed, primarily, because the Republican leadership in the State Legislature forced all of the bond issues on the primary ballot instead of following the Governor's plan of placing half of them on the primary ballot, and the balance on the general election slate.

It is hoped that the special session of the Legislature, called for June 26, will put these measures on the November ballot. We will be present in Sacramento to urge this action.

One result we can look upon

State Post Nomination

A. G. (Al) Boardman, director of education and research for the California State Conference of Operating Engineers, has been nominated as a public member of the California State Board of Registration for Civil and Professional Engineers.

Gov. Edmund G. Brown made the nomination on June 29.

It involves a new board position, created as a result of legislation adopted by the 1961 Legislature.

Boardman is a trustee of Operating Engineers Local 3. He served as a business representative of the local for 12 years.

with great satisfaction is the vote polled by Lt. Governor Glenn Anderson. Glenn has always been a good friend to the Operating Engineers and to labor in general.

He has also been an outspoken liberal, and this has made him the target of the extreme right wing in California. He was, until the primary election, considered the one candidate on the Democratic slate who might be defeated in the general election. He was the only member of that slate who had serious opposition.

He was subjected to a last minute mud-slinging attack of the worst kind. In spite of this, he ran second only to Governor Brown in the state-wide election results, and out-polled his Republican opponent in the City of San Francisco. We congratulate the Lt. Governor!

Labor's endorsed candidate for Superintendent of Public Instruction, Ralph Richardson, topped a field of five in a very close race. He will face his closest competitor in the general election. This is an extremely important race, because the education of our children depends on the quality of leadership in this office.

One further reminder: If you are not registered so that you may vote, you have until September 15, 1962, to do so. You may register at your City Hall, County Court House, or any campaign headquarters.



ENGINEERS HELP — It was "B Day" for the building trades June 2 at the Peninsula Memorial Blood Bank. Here Bill Raney of Local 3 presents Engineers' pledges to Mrs. Bertha Hanzlik, administrator. Cake is anniversary symbol.

San Mateo Blood Bank Gets Boost

By BILL RANEY and DAN MATTESON

Your Brother Engineers, their wives and friends gathered at the Peninsula Memorial Blood Bank last June 2 for the most successful "B Day" ever held.

The Operating Engineers moved from the bottom of the totem pole, which place they achieved last year, to third place, tying with Local 216 of the Teamsters. Thirty-six of the brothers and their friends showed up to give their blood to our bank. The Carpenters beat us by one donor. Plumbers 467, however, was "tops" with 41 donors.

Even though this 20th anniversary event was very successful, it did not nearly meet the need for blood. You brothers, your family and your friends can and, we hope, will go to the blood bank at any time and give to this worthy cause.

DONOR LINE

The day started off with Business Representative Brother Dan Matteson coming off the donor line first. Business Representative Bill Raney was kept busy most of the day cooking sausages along with Business Representatives from all other crafts, each doing a fine job to keep the breakfast going.

The presence of many dignitaries highlighted the day. Gov. Edmund G. Brown gave a compliment to the blood bank as well as to all the people from organized labor, who invariably support such civic causes. Congressional candidate William (Bill) Keller came through the donor line after giving his pint of blood without any fanfare. He gave to the Engineers blood bank. Don't forget him on election day next November.

One should note that the Logue Family was well represented. Brother Harold Logue and his two strapping sons all donated their blood. Mrs. Logue would have been on hand, too, but she was ill in bed. Brother Harold has very recently been through

17 operations on his eyes, without having to have any blood from your bank.

LISTING

Your officers, business representatives and all the members wish to sincerely thank the following donors, for their generosity and sincere desire to help their Brother Engineers:

Dan Matteson, Nat Johnson, Jim Jensen, Bill Keller, Bob Lehman, Harold Logue, Mike Logue, Doug Logue, Carl Yonkers, Bill Smith, John Sanders, Harold Guthrie, James Inks, Al Weese, Floyd Pike, Oscar Walker, Ed Davis, James Piffero, Harold Funk, Gerald Vohler, Nick Carboni, Earl Johnston, "Skeet" Edmondson, Jack Nolan, Jim Toole, Norris Cummings, Mrs. Dorothy Cummings, Roy Gingery, Roy Copley, Walt Geyer, Ward Weber, Ben Marrs, Vernie Fuller, Wayne Rommel, Dick Hutchings and Dan Matteson.

Other kudos are due Brothers Osborne and Ed Davis, who so very generously donated their skills to preparing the grounds for the new Boys' Club of San Mateo Gym and Ball Park. Contractors and Brothers Al Fisk, Dave Firenze and George McLean, and Bud Kunz, donated the equipment.

WORK PICTURE

At this writing the work picture looks good for the rest of the year, but the employer lock-out is still on, causing nearly half the Engineers in San Mateo to be on the out-of-work list. Some of the new jobs in the offing are:

L. C. Smith—Low bidder on a good-sized paving job at the airport to the tune of about \$1½ million.

Frank & Beaudet, awarded a \$200,000 highway project near La Honda. Varwig will have a quarter of a million job in the Mills Estate Area. J. H. Fitzmaurice was low bidder on the landscaping on the new College of San Mateo for about \$600,000. Kunz Paving has picked up a number

Report From San Rafael

By T. J. STAPLETON

New Jobs: Syar & Harms are moving in on Ceccotti's million-dollar job at Marin City. According to Brother Jack Bean, super for Syar & Harms, they will use about 10 operators on this job. 2 D9's, 6 20's, 2 8's, and possibly a dragline later.

They have 300,000 yards to move in about 90 days time.

Maggiore & Son have the underground work with a Crane working at the present time. Lee Mac Paving also has part of this job.

C. D. Madsen has equipment and men scattered all over the county—in Sausalito, Belvedere, San Rafael on Lincoln Ave. and Blossom Court, and in Sleepy Hollow.

Bobo Construction has two good jobs coming up.

A. G. Raisch has started up again at Lucas Valley and Terra Linda.

Ghilotti Bros. also started up. We note they were recently awarded contracts for the street and road work on Sir Francis Drake Blvd. between Wolfe Grade and El Portal Drive. Also on Waldo Tunnel and Golden Gate Bridge.

S.F. Needs More Blood

Local 3's San Francisco blood bank program needs a shot in the arm.

We need more donors.

Giving blood is a demonstration of our spirit of brotherhood.

Not long ago there was a call for 23 pints of blood for one person. We weren't able to meet the demand.

Now we have only a token amount of blood on hand—not enough to care for an emergency.

If a brother isn't able to donate blood himself, he should pass the word on the need to friends and relatives.

Donors to the San Francisco District Blood Bank Reserve Fund in recent weeks have included Brothers Howard P. Miller, Marvin L. Neal, Dick Farm, Harry J. O'Connell, Herb Nefsted, Phil Serpa and Philip Serpa Jr., and Elsie M. Kennedy and Anthony Serpa.

Blood is given at the Irwin Memorial Blood Bank. If a member wishes to make a donation, he may call the Dispatcher's office, which will make an appointment for him.

of smaller jobs throughout the County.

Weinrich Associates was low bidder at \$103,000 for a water system on Sand Hill Road, back of Menlo Park. There will be a 19-story apartment building coming up before long on Third Ave., near El Camino, in San Mateo.

Massmon Construction Co. will do a bridge job on Brewer Island that will cost approximately \$600,000. The company anticipates doing a number of these bridges in the same area in the near future. This one is mostly concrete pile and prestressed concrete structure.



"... and I promise to love, honor and cherish you... and to REGISTER AND VOTE."

Santa Rosa - Ukiah

Some Jobs Are Running

By RUSS SWANSON and
LOU BARNES

At this writing the Laborers are still meeting with the A.G.C., but by the time you read this our anticipation is that we will be working.

As we mentioned in our previous issue, the work outlook for this season is very good. Jobs that are running at the present time by some of our independent contractors who have signed the Laborers' interim agreements are:

Plumas Development Corporation at the Santa Rosa Flood Control Dam in Santa Rosa. Pete Barretta at the same location. Reichhold and Jurkovich at Steel Lane. Santa Rosa Construction Co. at the new Lucky store and other locations.

DAM JOB

The job going at Usibelli Dam in Pope Valley will be the largest private dam in the state. Sonoma Development Corporation is doing work at Cotati with five of our operators working. Lee Mac Paving is doing the turnouts at

St. Helena Mountain. This will definitely increase the safety situation on this road.

Recent awards for the immediate area are: Sonoma Construction, \$67,668 for widening four bridges across Piner Creek and three branches of Santa Rosa Creek on Guerneville Road. Arthur B. Siri Co., awarded the channel improvements on Russian River for \$103,750. O. C. Jones & Sons of Berkeley, awarded the street and road work for the Sonoma Aqueduct access road for \$15,033.

AQUEDUCT

In our last issue we stated that the Valley Engineers were low bidders on the Sonoma Aqueduct. However, due to technicalities the second bidder, M. G. M. Construction Company from Concord, was awarded the contract.

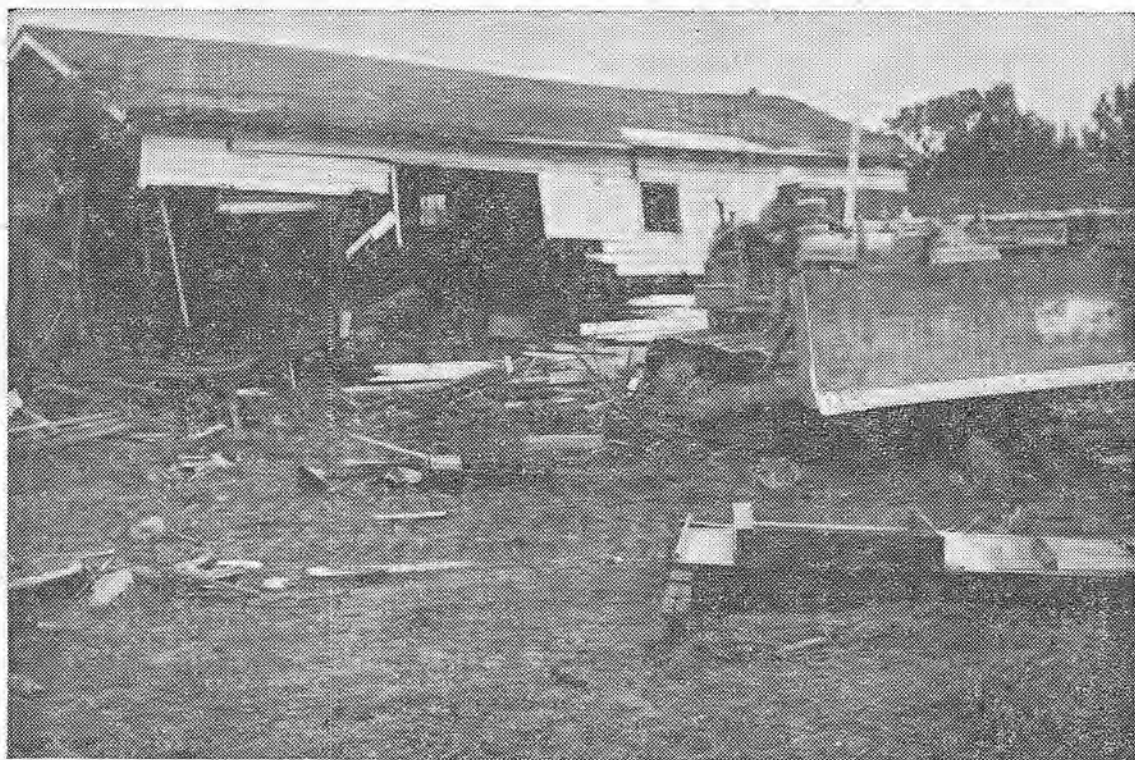
The Hopland job south of Ukiah which was recently awarded to Fredrickson & Watson and Hooker Company is just getting under way. The dirt work was sub-let to Mcammon Construction Company. This job will

be using about 40 men at the peak of the work.

BRIDGE

Another job recently awarded in the area is a bridge and approach construction for the amount of \$72,583. This is on the Ukiah-Boonville Road across Robinson Creek and was awarded to W. H. Lindeman & Sons of Red Bluff. Hooker Company of Sun Valley is doing paving on the Willits to Fort Bragg road. It also has a crusher in operation north of Willits. Absco Paving is also working in and around the area, and the gravel plants are going strong with stockpiles being built up. Absco Paving, Hooker Company and McCammon Construction Co. signed the Laborers' agreement.

We want to thank all the brothers for their terrific turnout at the district meeting that was recently held. Keep up the good work, and many thanks. Our next district meeting will be held in Ukiah on Thursday, Sept. 6 at the Labor Temple.



CLEARING A PATH FOR PROGRESS
Thomas McCaffrey Makes Room for Purity Store in Ukiah

SAN JOSE GIVES REPORT

By A. J. HOPE, W. H. DAVIDSON, G. L. MOORE and J. N. HALL

Construction work has practically come to a standstill in this area. Only a few of the contractors have been able to continue to work and they are only using a skeleton crew.

Pellegrini Construction was the low bidder on a \$250,000 contract for improvements on an industrial site on Del La Cruz Blvd., in Santa Clara. E. Pestano is doing the underground work on this project. Pellegrini Construction Co. has sent two of its Michigan scrapers and two dozers to Utah for a stripping job there.

Spartan Construction Company is working on a 36-inch storm drain on Prospect Ave. It also is working on a new sub-division on Prospect Ave., and McCarthy and Spiesman are doing the grading and paving.

EXPRESSWAY

The estimated \$2,500,000 Oregon Avenue Expressway has been approved by the voters and

work is expected to start in 1963. The expressway will stretch for 1.6 miles from the Bayshore to Alma Street. Nine streets will be closed by the project and 90 homes will have to be removed.

Work in the Santa Cruz area is very slow, with just a few small jobs going. Phil Calabrese did the excavation on the Del Webb Motel site on the Santa Cruz Beach. Clark & Clark are doing mostly septic tank work. Jim Evans and Wendall Batt have a few small jobs scattered around Santa Cruz.

Granite Construction was the low bidder on the four-lane Cabrillo College Road. This bid went for \$96,986. The State Division of Highways has awarded a contract to Granite Construction for building a four-mile stretch of expressway in Alpine County. This went for \$1,144,041.

LOW BIDDER

Phil Calabrese Construction Company was the low bidder on

the San Miguel Canyon Road and Highway No. 1. This firm is also busy doing street improvement work in the City of Gonzales.

Granite Construction was the low bidder on a \$34,533 road job south of Castroville.

Madonna Construction has kept busy on its highway jobs in Gonzales and San Ardo. It has started to haul the import on the Gonzales Highway and is making good progress on the highway at San Ardo.

Pamphlet Available

An informational pamphlet, "California Employers and the Older Worker," has been prepared by the California State Employment Service to explain the legal issues and recourses available to workers who encounter discrimination in employment due to their age.

Personal Notes

Santa Rosa-Ukiah

We deeply regret to inform you of the deaths of Brothers Perry Hamilton and George Rochester. They will be missed by many.

A recent marriage is that of Joe Bartlow — our hearty congratulations. Congratulations are also in order for Brother and Mrs. James McGinnis, who are the proud parents of a new baby girl.

Blood donors attention: We are in need of blood for our blood bank. This month no donors were reported to us. Please contact the Community Blood bank if you can.

San Rafael

Our thanks to Brother Richard W. Irwin, who donated blood recently. We could use many more donors. Please contact our office to arrange an appointment.

Best wishes for a speedy recovery to the following brothers reported on the sick list: Fernand "Frenchy" Carpentier at Novato General, Roy Scott at Ross General, Bob James at Marin General.

Congratulations are in order to Brothers Marv. Ghilotti, Ken Drake and Pete Montoya on becoming fathers recently.

Fresno

It is with deepest regret we report the passing of Brother Floyd Adams. Brother Adams was a member of Local 3 for many years and was employed as a dragline operator by Industrial Asphalt Company. Brother Bert McCully is in the Fresno Veterans Hospital. We wish him a speedy recovery.

We are holding a check in the office for Brother Clarence Buck. Brother Thurman Cox, a member of Local 3 for many years has gone into business for himself. He's opened a restaurant on Ventura Avenue.

Brother Herschel Bunch was our only blood donor.

Utah

Sympathy to the families of Brother Jay McMurtrey, who was killed on the Brewster job; Brother James Snowden, killed in an automobile accident.

Speedy recovery to Brother Lee A. Reed, employed by M. K. Company at Moab. Brother Reed had his right leg nearly severed below the knee and his left leg also injured. Brother Lavell ("Robbie") Robinson suffered a heart attack which put him in the hospital for several weeks. Seems to be doing fine at this time.

Congratulations to the Kerry Youngs on their new arrival, who will make the seventh. This one was a boy.

Sympathy to Brother Jay Hansen over the loss of his wife.

San Jose

Brother Les Pettit was the only blood donor during the month of May. The amount of blood in the San Jose Blood Bank is low and we urge the members to donate as soon as possible.

Brother Ron Mossholder has entered the landscape business.

Redding

We are holding checks in our office for the following members:

J. T. Fowler, F. K. Corbit, C. H. Flowers, E. D. Baker, B. F. Plunkett, Ike Landrum, Walter McIntosh, J. Pena, E. O. Mills, Carl Johnson, William Hancock, Frank Skala and J. G. Gray.

Hawaii

Speedy recovery to Brother Rupert Teves, business representative, who is in the Queen's Hospital and Brother Theodore Fragas, who is in St. Francis Hospital.

Our condolences to the family and friends of Brother Bruce Butts, who passed away on June 4. Brother Butts was an employee of Hilo Iron Works.

Vallejo

Congratulations to Brother J. T. Barnes. A son, Hugh Donald Barnes, arrived May 28, 1962, weighing 8 pounds, one ounce. Congratulations to Brother Gary McGuire. A daughter was born May 28, weighing nine pounds, five ounces.

Stockton

A vote of thanks to Brothers Merle F. Laughlin, Roy D. Brawley and Edgar A. Stephenson for their recent contributions to our Blood Club.

Sacramento

A crane accident resulted in the death June 14 of Brother Tom Weaver. Brother Weaver was killed on the N. P. Van Valkenburg job in the "pocket area" off Riverside Blvd. Brother Bill Buckley, his oiler, was slightly injured.

San Mateo

We are sorry to hear of the illness of Brothers Red Russell, Bill Trimble and Walt Underwood. To each of you our wishes for a speedy recovery, and the same to any whose names we may have missed.

Sacramento Projects —List Is Long One

By ERNIE NELSON, ED
HEARNE, BILL METZ, AL
DALTON and CLEM HOOVER

Hydraulic Dredging Co. is still going three shifts at five points.

R. C. Mahon has about one more month on the steel erection at the State building at 9th & O.

A. M. Van Valkenburgh is almost finished with the sub-contract on the sewer job on San Juan Road in North Sacramento. N. P. Van Valkenburgh is moving in two trenchers to start laying pipe on the rest of the job.

All the AGC contractors are still shut down in the Sacramento area at this writing.

Over in Yolo County some of the small contractors have a few jobs going.

P. C. A. and Granite are the only rock plants that are still running. The rest have shut down because of an excess of material.

Ben C. Gerwick is coming along fine with the pile-driving job at the Yolo-Port.

Several small contracts have been awarded that will be ready to go as soon as work resumes.

ROADS

Sacramento County's \$5½ million road program will go along as planned with little danger of being delayed by the labor dispute. Watt Ave. reconstruction from Arden Way to Auburn Blvd. is scheduled for the summer. And Sunrise-Citrus Road from Fair Oaks Blvd. to Greenback Lane will soon be under way and completed before winter.

Priority construction projects for this year are Watt Ave. from Don Julio Blvd. to M St. in No. Highlands to four lanes of traffic, Marconi Ave. to Clark Ave. and also four-laning of Auburn Blvd. at Arcade Creek.

The '62-'63 fiscal year for the county also includes Madison Ave. between Hazel and Main Ave. in Orangevale, graded to four lanes with two lanes paved; 65th St. between Florin and Fruitridge Roads, four lanes graded and two lanes paved; Arcade Blvd. from Del Paso Blvd. to Highway 40 and Fulton Ave. from Arden Way to Auburn Blvd., four lanes graded and paved.

Boyles Bros. have moved their camp for the core-drilling crew into the French Meadows area on Rubican River. The cores obtained from this test-drilling will be used by the engineers of Placer County to design the type of dams to be built. Our engineers are being flown to the job site from the camp by helicopter. This part of the country is wilderness area with only jet trails and a few logging roads.

WIDENING

A. Madonna is well along with the widening and paving of the North Shore road at Lake Tahoe. We have had a good bunch of first-class engineers putting the finishing touches to this stretch of road.

Riverbend Construction is going good now with a crew of top engineers at Prosser Creek Dam. The R. A. Heintz Co. of Portland rented its equipment to Riverbend Contractors. The rock for the rip-rap will be quarried from the lava slide on old Highway 40 five miles east of Truckee. They will put the 80 D loading out on a two-shift basis.

Jess Briggs and Conley-Davis have joined efforts with Fredrickson & Watson and Granite Construction Co. to excavate to sub-grade on the new six miles of freeway from the junction of Highway 20 to Hampshire Rocks on Highway 40. Bob Kurtz will be the project manager for Fredrickson & Watson. He is an old-timer with Local 3 and many projects finished with a good record in the past. Jess Briggs will handle the top position for his organization. Clements Rock Co. from Truckee will furnish all aggregates for the job.

Work in Aerojet has slowed quite a bit in some departments and picked up in others.

PROGRESS

Alex Robertson Co. is making good progress on the Nitro-plasticizer plant. Two brothers are working steadily on this job.

Chicago Bridge and Iron is hard at it and close to winding up its work.

Delta Construction Co. is doing excavating for several building contractors.

Krzych and Ramos has lost no time on the underground job in and around Florin. It signed the

Laborers' interim agreement and continued work. It will be in this area on this job for the rest of the summer.

Bud Barnardo is another contractor that has lost no time on his jobs due to the work stoppages.

The area around Pollock Pines is about at a standstill due to the labor difficulties.

J. A. Jones is moving in equipment on the Chipmunk Pass. It has a beautiful string of rigs ready to go and also has a 180 Northwest coming in. This job will be a road and dam project.

Bechtel Corp. is still working a few of the brothers on the jobs which are not picketed. It is working at Slabb Creek and beyond Loon Lake for the coming season.

DAM JOB

The Peter Kiewit Sons are still working in Union Valley on the dam job. They are making fast progress since they opened the new pits. It shortened up the haul and it is better material to work with, although there are a number of large rocks. Bob Bohan is the project manager on this job.

Cameron Eldorado Dev. Co. is making fast progress on its housing project. This job is out of the subsistence area but has been working steadily along with the smaller construction companies.

Joe Vicini and Bennet Murray are making a job for the brothers. They seem to always be working in the area some place.

The Tahoe Lake area soon will be doing a few small jobs. The Harms Construction Co. has started the hot plant and will create a lot of small jobs for the brothers living in the Tahoe Valley. It has been hauling hot stuff from Carson City, Nev., for the jobs.

State Has Lots Of Centenarians

A review of California's new medical aid for the aged program has turned up 24 persons over 100 years of age, two of whom are 119.

The State Department of Social Welfare stated this interesting fact was revealed by a sample study of 3,852 case records out of a total 13,500 persons coming into this new aged medical care program during the first three month's operation—January, February, and March of this year.

All of these "over-100" persons in the sample have been residents of California for at least 11 years, with average period of residency being 46 years. One Alameda County woman, 101, has been a California resident for 99 years.

The new medical aid to the aged program became effective January 1, 1962, in California. It provides federal, state, and county funds to care for long-term, chronically ill persons over 65 whose incomes are inadequate to meet costly medical expenses. The program becomes effective only after the first 30 days a patient is confined in a hospital or nursing home.

He Shared In Union Growth

Meet old-timer Owen Haney.

He'll be 84 on August 8. And next October, he'll mark his 59th anniversary as a member of the International Union of Operating Engineers.

Haney became a member of the old Engineers Local 159 at Eureka on October 3, 1903. He had been a member of Pile Drivers and Bridge Builders Local 77, which later became Local 34.

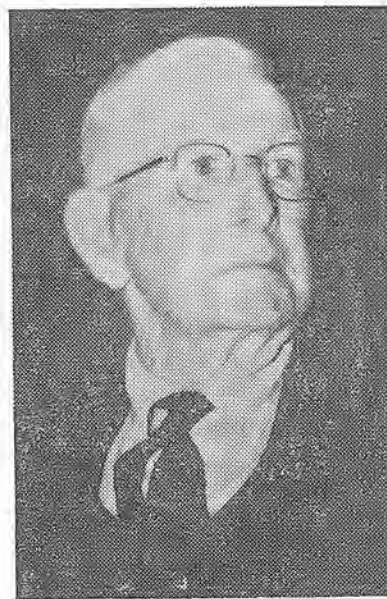
He was an engineer on a pile driver in construction of the old Key Route pier, which served the East Bay's transportation system for many years.

"When I went to work in pile driving in the Bay Area in 1903, I got \$2.50 for a nine-hour work day," Haney recalls. "As a result of union activity, the work day was reduced to eight hours and wages began climbing—until operators were getting \$5 a day just after the 1906 earthquake and fire.

"I've seen wages and benefits improve through the years and have been happy to share in the progress of the Engineers."

Haney became a member of the Engineers old Local 59 as he worked as an operator on pile drivers and derricks in the Bay Area. Local 59 was one of the groups which merged into Local 3.

Haney, who retired in 1952,



OWEN HANEY
He's Seen Progress

has made his home in Emeryville, at 1078 48th Street, since shortly after the turn of the century. He was born in Eureka.

His hobby for years was deer hunting.

"I missed a lot of good jobs because of deer hunting," he recalls. "But it was great recreation and I think it's had a lot to do with my longevity."

He suffered a stroke in February.

"Outside of slowing down a bit, I feel OK now," he says.

Pensions

NORMAL			
	Effective Date		Effective Date
Benedict, Clare L.	9/16	Horstmeyer, H. W.	6/62
Erickson, Erick P.	11/62	Sivils, Clayton L.	5/62
Gerst, Adolph M.	6/62		
REDUCED			
Brown, James A.	8/62	Lia, Joseph	5/62
Graham, M. C.	11/61	Pierson, Edward N.	6/62
Johnson, Charles	7/62	Rathjen, John A.	8/62
Knight, Ralph L.	9/62	Young, Edmund H.	8/62
EARLY RETIREMENT			
Mountney, J. A.	8/62		
DISABILITY			
Johnson, John H.	6/62	Rider, James H.	2/62
Lloyd, John E.	4/62		
BASIC			
Cuckler, Wesley R.	5/62		

WHEN YOU NEED IT--

YOU NEED SERVICE...

ERBCO has competent, trained servicemen headquartering in San Francisco, Oakland, Sacramento and Fresno. Their job is to service ERBCO construction machinery on your job anywhere in Northern California.

Field and job equipment service is part of the package when you...

get it from

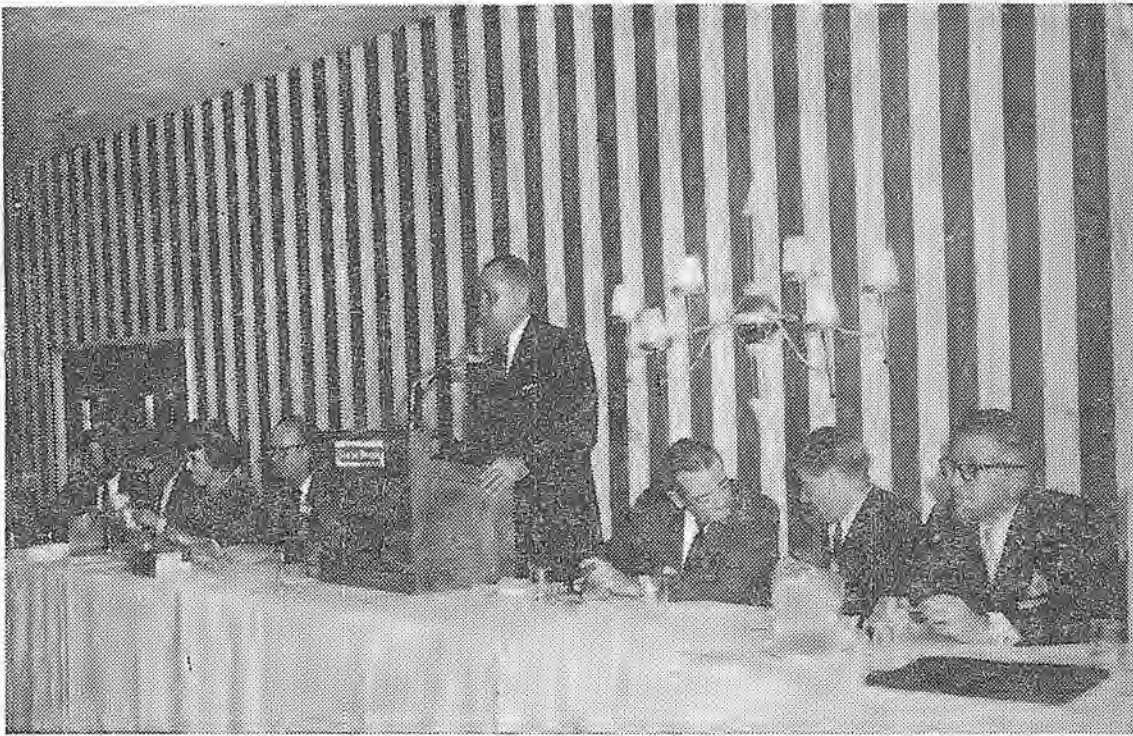
EDWARD R. BACON COMPANY
CONSTRUCTION EQUIPMENT

Folsom at 17th Street, San Francisco 10, California HEmlock 1-3700
Sacramento • Oakland • Fresno

Deaths

Name	Initiation Date	Died
John Lenderman, Pollock Pines.....	9- 7-57	5-10-62
Bill Hogue, Gonzales	2-23-41	5-23-62
Charles Lamma, Sacramento.....	10- 2-54	5-24-62
Floyd Adams, Clovis	6-17-39	5-17-62
Eddy Bordin, Chico	2- 7-42	5-15-62
R. E. Winans, San Jose	8- 5-50	5-26-62
Floyd D. Wallace, San Mateo.....	6- 6-36	5-28-62
Irl Shaver, Oroville.....	7-19-41	5-28-62
Graydon H. Lynch, N. Sacramento.....	11- 1-58	5-29-62
Bernard A. Blinn, Smartsville.....	11- 3-56	5-62
Fred L. Tindall, Reno	2- 4-62	5-30-62
George E. Rochester, Geyserville.....	12- 4-60	6-62
Jay McMurtrey, Brigham City, Utah	1- 5-57	6-13-62
Albert F. Naas, Eureka.....	9- 6-41	6-13-62
Bruce Butts, Hilo, Hawaii.....	9-11-60	6- 4-62
Tom Weaver, Sacramento.....	11- 1-37	6-62
W. D. Allen, Salinas	12- 6-41	6-19-62
Guy Edwin Troedson, Ceres.....	3- 4-50	6-62
Bruce M. Cromwell, San Francisco	11- 6-48	6-21-62
Alfred J. Gallaway, San Francisco.....	11- 1-52	6-25-62

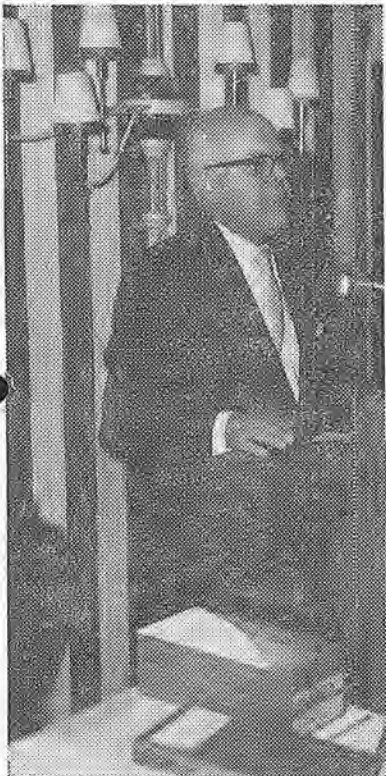
ENGINEERS AT REGIONAL MEET



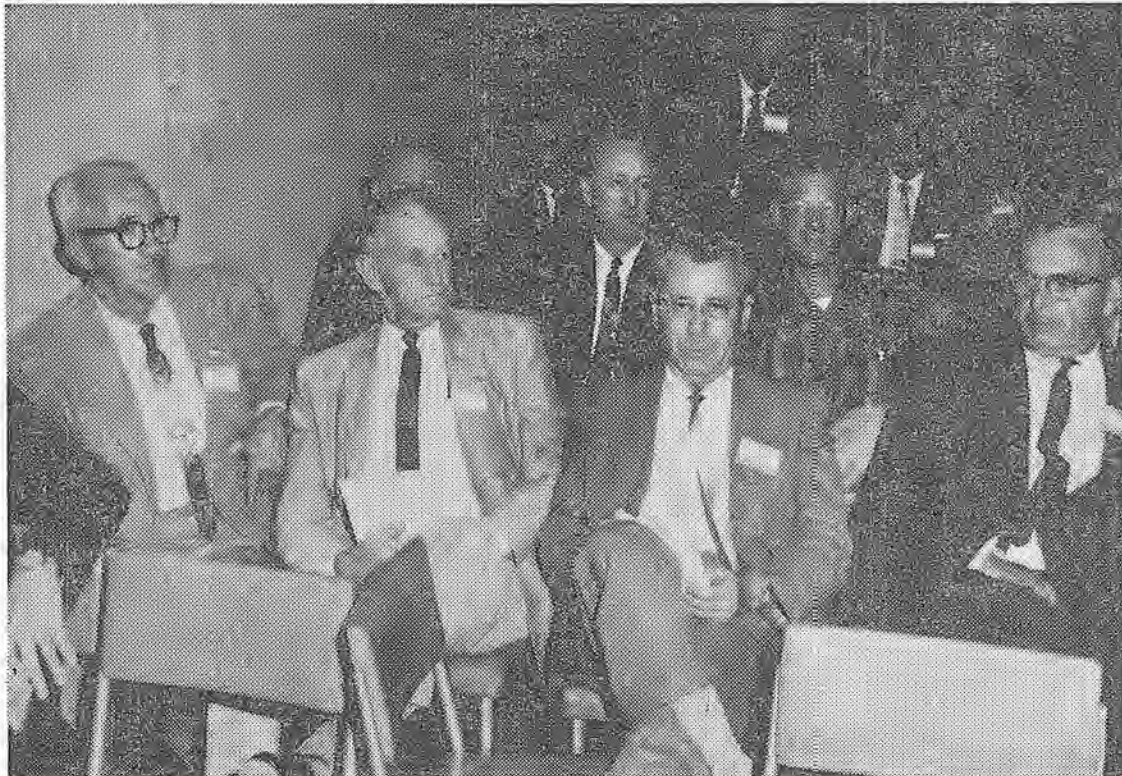
OPENING SESSION—Twenty-one locals in 10 states were represented by more than 100 delegates to the semi-annual meeting of the Western Conference of Operating Engineers last month in San Francisco. Here delegates are welcomed to San Francisco by Business Manager Al Clem of Operating Engineers Local 3. Clem and other members of the Local 3 bargaining team were in Northern California contract negotiations during most of the conference program.



OFFICIALS—Jack McDonald (left) of Seattle, president of the Western Conference, and Newell J. Carman of San Francisco, I. U. O. E. regional director and secretary-treasurer of the conference, discuss program. Both are international vice presidents. Meeting began on June 8.



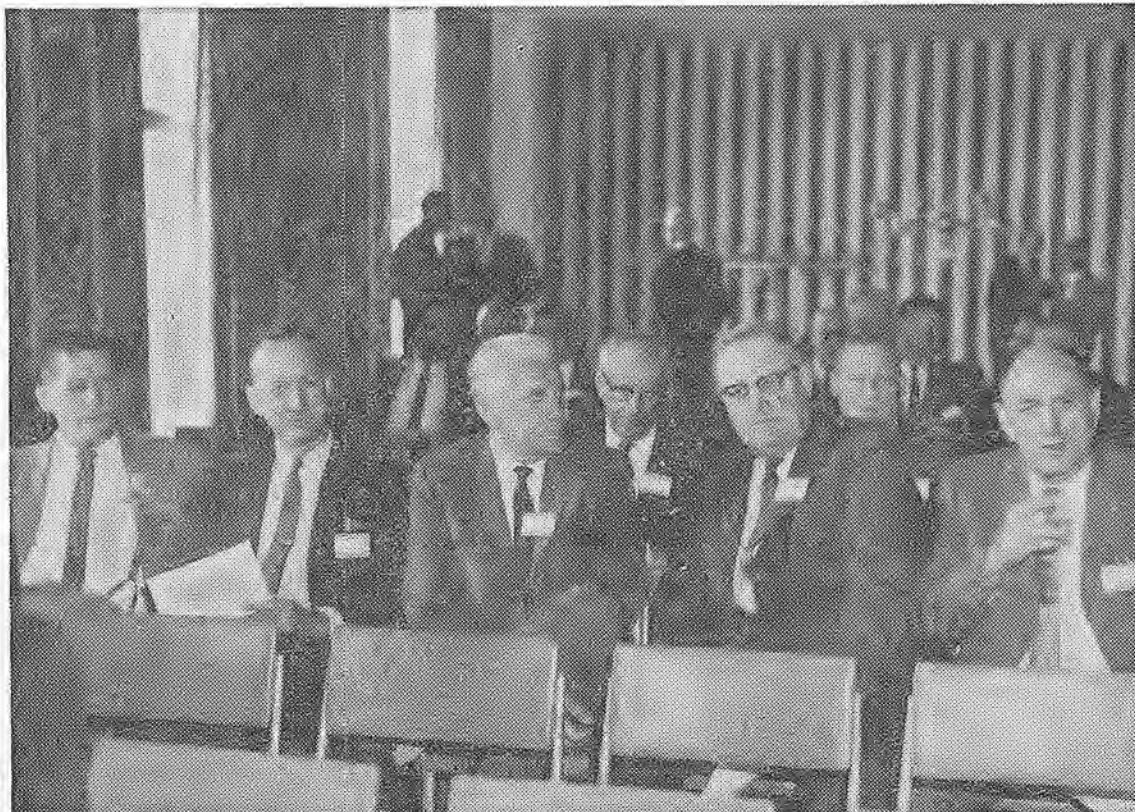
GREETINGS—Thomas L. Pitts, executive secretary-treasurer of the California Labor Federation, addresses delegates.



DELEGATES—Pictured here (from left) are Local 3 Executive Board members Jack Slade, Charles Kirkwood, Al Perry and Earl Horn. District Representative Walter Talbot and board member Cliff Martin can be seen behind them.



SPEAKER — Joseph O'Donnell, executive director of Harvard Trade Union Program, at first session.



WORKSHOP—This group includes Art Pennebaker, Walt Talbot, Local 3 Financial Secretary A. J. (Buck) Hope, Al Boardman and Local 3 President Paul Edgecombe. Wide variety of topics featured discussions at the meeting.



GUEST—Bryan Deavers (right), president of California Building and Construction Trades Council, is shown with Local 3's Jim Jennings, a council executive board member.

Marysville Ready For Work Pickup

By HAROLD HUSTON,
C. R. VAN WINKLE,
W. R. WEEKS
and MIKE KRAYNICK

Like Barkis in David Copperfield we are "willin," and have been "willin" for some weeks now. However, due to the construction shutdown, our willingness hasn't been of much help.

Of course, what we mean is that we are "willin" for the work to start, and for everyone to get back on the job, and we hope that when this reaches you the unpleasantness will have begun to fade into the dimness of memory and that everyone is working and back on his feet.

To talk about the progress of the work during the past month may seem a little foolish under the circumstances, but not all of the brothers have been out on the bricks on account of the recent unpleasantness.

Most of the shops and plants have kept going. New York Machine Shop in Oroville was on a reduced basis, but in one or two cases crews actually have increased. Some of the cement plants shut down and then reopened, but outside of A. G. C. members' plants, most of the other plants and shops have kept going as if things were normal.

In the past month negotiations have been completed with the Diamond Steel Company and the Star Well Drilling Company.

JOB LIST

Valley Engineers are winding up their gas collecting pipe line job in the Meridian-Grimes area. This was a job for the P. G. and E. to collect gas from the wells in that area. The company is down to a mopping up crew with only three brother engineers and a couple of fitters left.

Clarence Baker of Chico has been busy clearing right-of-way for the relocation of the Newville road job on which R. E. Hertel is the prime contractor. This \$357,000 job consists of five miles of surface road and a bridge over Stony Creek.

Monty Brown road job at Corning is down to the blue tops and should be ready for asphalt by the time this goes to press. Tom Gay is ramrodding this spread and has a dozen or so of Local 3's finest turning out a road the citizens of Corning will be proud of.

Incidentally and for your information the Marysville office area now runs to the little town of Richfield above Corning, where we have a new enterprise to welcome to the area.

Martin Brothers out of Concord has put in a sand and gravel plant and a cement plant and has called it the Thomas Creek Sand & Gravel Co. At the present time three of our best are working and we hope that business builds up so that we add to the crew.

Major work around the Chico and Oroville area has been shut down. However, there has been considerable small work going on, some of which has been a headache. Butte Creek Rock, dormant because of the strike and lockout in the Chico area, had a small job going at Lake Almanor on which four of the brothers made a few days. What was said about the

Chico and Oroville areas is true around Marysville. Baldwin and Teichert at Hallwood have had the gates locked.

LEVEE WORK

Earl Parker and Lee Stephens have kept right on working on their levee jobs. Parker, at Wheatland on the Bear River, has kept nine of the brothers busy and is nearing completion. Lee Stephens in the Dantoni area on the Yuba has 12 members keeping the equipment hot and is about 60 per cent completed.

Macco Construction Co. is busy driving piling in the Nicolaus area for the river crossing for the transmission line being erected for the Bureau of Reclamation. Macco is subbing from the general contractor, Commonwealth and Schulman.

The line runs from Red Bluff, where it ties into the transmission line from the new Trinity Power House Plant to Tracy, a distance of approximately 215 miles. Total cost of the contract is reported to be \$10,360,000. It is a 230 K V line with steel towers, according to Don Alexander of the Bureau of Reclamation, Red Bluff.

NEW WORK

Teichert and Sons, Inc., were low bidders at approximately \$218,000 for resurfacing a total of 32 miles of Highways in various locations. Part of this contract is the resurfacing of about 8 miles of El Centro Boulevard in Sutter County to about four miles south of East Nicolaus. The same firm was low on three other areas in Sutter County, at \$16,470.

Alcan Pacific Company will build the 100 low-income rental units at the Richard Housing Center near Yuba City. The bid, lowest of six, was \$1,213,483. Central Coast Construction of Berkeley will erect the new 16-room classroom elementary school in Gridley and the addition of a cafeteria to the Sycamore School. The bid was \$303,600.

In the Chico area Teichert was the low bidder on three bridges for Butte County north of Chico and the apparent low bidder on four others. The three bridges will be constructed on Sacramento Ave. Meridian Road and Bell Road over Mud Creek. Bid price was \$199,530.

Two of the other four bridges are those to be built on Nord Highway over Mud Creek and Hicks Lane over Sycamore Creek. The bid was \$143,483. The last two bridges, for which the bid was \$92,575, are the one at Cohasset Highway over Mud Creek and Eaton Road near Dry Creek.

Harms Brothers of Sacramento was lowest of three bidders at \$111,472 for the resurfacing of a total of 14.1 miles of Highway 89 and 49 in Sierra County south of Sierraville and Loyalton. From the looks of things, there should be more than the usual amount of work this year in the high country.

The same firm was low at \$203,160 on the relocation road job around the Merle Collins Reservoir (behind the Virginia Ranch Dam) in North Yuba County.

Hawaii Gives Project List

History has been made in the dredging industry. Your union has progressed another step forward in negotiating the first Pension Plan here with Kaiser Hawaii-Kai Development Company (dredging division).

The employer will contribute 10 cents an hour per employee into the Pension Trust Fund of the Operating Engineers.

Summer is here once again and this means lots of leisure time for the children. Brothers, you should stress the importance of safety to your children while at play, traveling on the highways, and especially at the beaches.

Pacific Dredge at Kawaihae on the Island of Hawaii is going full swing. Brothers Andy Ako and Peter Wong are acting stewards on this job.

LOW BIDDER

At Hawaii-Kai, A. J. Thompson was low bidder and awarded a contract to put in streets and curbing gutters, and Highway Construction Company has been given another section of the sewer line.

We hope the Corps of Engineers will speed the plans for the new harbor on Molokai which will mean approximately two and a half years of dredging work for our members. Eight million yards is the approximate amount to be dredged.

Brothers, when you are terminated from employment, please report to the union office and sign your name on the unemployment list before filing for unemployment compensation. Also, please check with the union office regarding the continuation of your medical plan at a special rate of \$12.64 per month, per family. This special rate is good only for three months while you are unemployed. Thereafter, if you are still unemployed at the end of the third month, please contact the union office again for further assistance.

NOTICES

In the future, we will not be mailing notices to you. You will find a schedule of general membership meetings in the monthly Engineers News. The only time you will be receiving a meeting notice through the mail is when there is a special meeting.

The Organizing Advisory Committee (OAC) meets every Mon-

ATTENTION ALL BROTHERS

There will be a general membership meeting on Thursday, August 23, 1962.

Time: 7:30 p.m.

Place: YWCA (Central Hall), 1040 Richard Street, Honolulu, Hawaii.

day from 7 p.m. to 9 p.m. to help you with any problem you may have.

A safety program for the employees at Hawaiian Equipment Company, Hilo Branch, has just been started. Realizing the importance of a safety program, the company is giving its fullest cooperation. Regular monthly meetings, last Tuesday of each month, will be held during working hours by the joint safety committee representing the union and the company.

As part of the program, an inspection of the company facilities will be made prior to the meeting by representatives of the union and the company to see that the safety program is being carried out.

COMMITTEE

Union members on the safety committee are Brothers Raymond Savella, Jerry Nago and Shigemi Ogata. Incidentally, Brother Savella was united in marriage to his beautiful wife, June, on June 9, and celebrated the occasion with a terrific luau. Our best wishes to the newlyweds.



GOLD TITAN AWARD—Six area union representatives received the Martin Company's Gold Titan award during a luncheon at Beale A. F. B. Leslie G. Mulzer, T-5 site operations manager for Martin, presented awards in recognition of significant contributions to labor-management relations during activation of Titan missile project in the Sacramento Valley. Harold Huston, district representative of Operating Engineers Local 3, is shown second from left.

The last apparent obstacle (except for the present work stoppage) to the construction of the Camp Far West Dam on the Bear River was hurdled recently

when the landowners in the South Sutter Water District approved by a heavy margin borrowing an additional \$1,500,000 from the State.

Pearl Harbor Recognition For Local 3

Operating Engineers Local 3 has been given informal recognition within the Pearl Harbor Naval Shipyard. Rear Admiral J. M. Farrin, shipyard commander, notes there has been a "co-operative and constructive relationship" in a letter to the union.

Following is the letter from Admiral Farrin to Local 3 Representative Harold Lewis at Honolulu.

"Dear Mr. Lewis:

"This will acknowledge receipt of your letter of May 24, 1962, requesting that the Operating Engineers Local Union No. 3 be granted informal recognition within the Pearl Harbor Naval Shipyard under the provisions of Executive Order 10988.

"The statements made in your letter, and the materials enclosed therewith, have been reviewed and are considered to fully meet the requirements for informal recognition.

"Accordingly, the Operating Engineers Local Union No. 3 is hereby granted informal recognition as representative of its members employed in the Pearl Harbor Naval Shipyard. The rights and privileges of your organization will be governed by applicable provisions of Executive Order 10988 as well as Navy Department and Shipyard directives to be issued in the near future. A copy of the pertinent directives will be furnished to you at the earliest possible date.

"The informal recognition status hereby extended will remain in effect until such time as your organization (a) ceases to meet all requirements for such recognition or (b) qualifies for and is granted formal or exclusive recognition under Executive Order 10988. In order that our records may be kept up to date, you are requested to keep this Shipyard informed concerning any future changes in the officers and representatives of your organization, or in its Constitution and By-Laws.

"It is a pleasure to extend informal recognition to the Operating Engineers Local Union No. 3. I am looking forward to a continuance of the type of co-operative and constructive relationship which the Pearl Harbor Naval Shipyard has enjoyed with your organization in the past and which, I am sure, President Kennedy envisioned in issuing Executive Order 10988."

'Thank You For Bible'

Local 3's San Rafael office received the following note from the widow of Brother Kenneth Briggs, who died on May 19:

Thank you so much for the beautiful memorial Bible. It was a lovely way to express your sympathy, and I will treasure it always. There are no words to express the heartfelt thanks I owe you for the help you have been to my husband over the years. I received the check last Friday. Kenneth would be very proud of the Union, as I am now. Thanks again for all your help.

Sincerely,
Jewel Briggs.

Dispute Is Settled: Fresno

By JOSEPH MILLER,
B. F. HELLING and
G. C. MULLOWNEY

A settlement has been reached with Hall Earthmoving Company (owner Ralph Hall) to end the dispute that we had with the company concerning work performed at the Chowchilla Water District project.

The National Labor Relations Board ordered the company to reinstate those employees who were fired and to pay them full wages for time lost. Hall also agreed and paid retroactive the amounts due the employees for fringe benefits, which were due at the rate of 35 cents per hour since the job started. The NLRB also ordered Hall to post notice that he would not interfere in any manner with his employees joining Operating Engineers Local Union No. 3.

ELECTIONS

The NLRB conducted elections for representation at both the San Joaquin Rock Company and Sanger Rock and Sand Company operations on June 15th. These elections were held to determine who the employees desired to have as their representatives.

We are pleased to announce that they unanimously voted in favor of Operating Engineers Local 3. New agreements will be negotiated to cover these employees in the near future.

We wish to take this opportunity to thank the members of the Fresno District for their excellent cooperation in the handling of their unemployment claims. We hope that we can have all of the cases resolved in the near future.

Rivers Construction Corporation has its 20-inch pipeline job

over at Shandon in Local 12 area and is moving right along. Local 12 sent a jeep over for the Fresno office to check the job with, and it surely helped to get around on the job. This company started the job at Avenal and went straight over the hills to Shandon.

CLEANUP

Cherf Brothers and Sandkay have called back a few of the Brothers and have started back to work at Johnsondale. This job has a lot of cleanup work and some slides to clear. This should keep them busy for about two months. Jolly & Jurkovich have Miles & Son putting down cement treat with two wood-mixers. This company is renting all the equipment on this job. Clyde Fore has a blade. Stanton Biggs and Gene Richards also have blades. Joe Volpa has a roller and Miles & Sierra has a roller. This company was to start black top June 20.

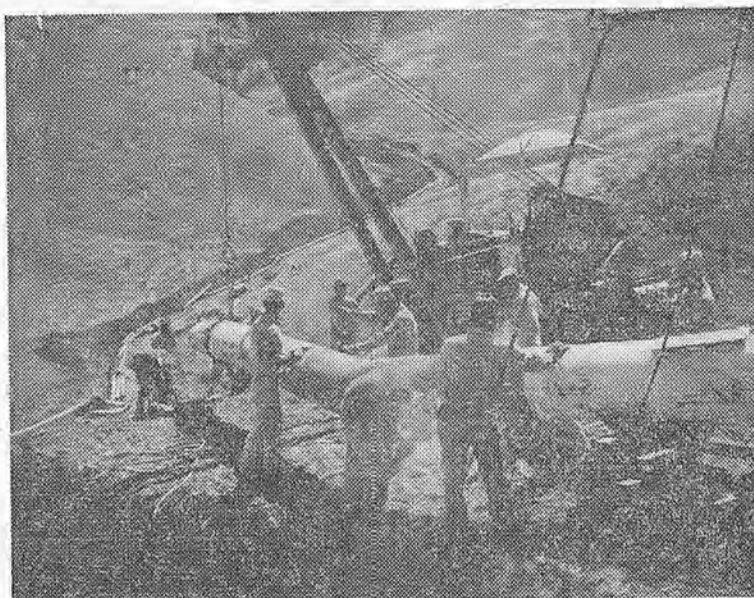
Fresno Paving was awarded 5.5 miles of resurfacing on Fresno streets. It also was low bidder at \$104,494.00 to construct streets and water drains for Sierra Sky Park. It was awarded a road job for \$463,562.00 at Corcoran.

Regent Construction has a few Brothers busy at Visalia on storm drains. This company was low, at \$152,577, to construct drains for the freeway, which will start about September of this year, through Visalia. Stockton Construction has started on the sewer line job on Marks Avenue in Fresno.

NORTHERN

In the northern part of the district there have been a number of small jobs let that will not start until the Employer-Laborer dispute is settled.

Thoms Construction Company



MOVING ALONG—Photo of tie-in crew and side boom on Rivers Construction project at Avenal.

was low bidder of \$237,708 for bridges and culverts 17 miles east of Los Banos. Midvale Concrete was low bidder, at \$78,455, for concrete laterals for Chowchilla Water District. Frank P. Donovan was low, \$107,000 on clearing and grubbing lower San Joaquin River in Fresno and Madera counties.

A. E. Downer Company has a \$490,063 job in Los Banos for storm drains and pumping plant. McGuire & Heston was low bidder on canal and structures in Madera County for the Bureau of Reclamation, \$751,234.

Pittsburg-Demones Steel Company is erecting a 1,000,000-gallon water tank for the City of Madera, with Brother Ernie Houx on the guy derrick. We look for a busy year, but mostly small jobs.

Bldg. Trades Meet Set

More than 500 delegates representing some 360,000 construction workers from Eureka to San Diego will gather in San Francisco July 24-27 for the 41st convention of the State Building and Construction Trades Council of California.

President Bryan P. Deavers reports that convention headquarters will be the Towne House. Vice President Terence J. O'Sullivan of San Francisco is convention committee chairman. The council holds conventions every other year. Last session was at Long Beach in July, 1960.

President Deavers, whose home is at Richmond, is not running for office this year. He was re-elected to a four-year term in 1960. Formerly secretary of the Long Beach Building Trades Council, he has held the state office since 1956.

PROBLEMS

Deavers says:

"We expect a very lively 1962 convention. This is a political election year and we have a large number of construction trades problems to iron out.

"I am happy to be able to say that this year, for the first time since we were granted our charter in San Francisco in 1901, all 31 local councils are affiliated. This is real progress."

Incumbent vice presidents are J. J. Christian of the Los Angeles Building Trades Council, and O'Sullivan, an international representative of the Laborers Union.

James F. Ward of San Francisco Building Material Drivers Local 216, is secretary-treasurer of the State Council.

SPEAKERS

Speakers will include:

C. J. Haggerty, former secretary of the California Labor Federation, now president of the Building Trades Department, AFL-CIO, Washington, D. C.; John F. Henning, director of the California Department of Industrial Relations; Thomas L. Pitts, executive secretary-treasurer of the California Labor Federation; Lt. Col. John S. Wilson, labor advisor, Office of the Assistant Secretary, U. S. Army, Washington, D. C.

Rear Admiral J. R. Davis, public works officer, Southwestern

Redding Report

By J. B. JENNINGS,
S. N. McBRÖOME and
TOM ECK

As of this writing, there are still a few jobs going, some of which never were affected by the Employer-Laborers dispute.

The following involves independent contractors which have signed new agreements with the Laborers:

The Brandy Creek road job being constructed by the Ray Kizer Company around the south shores of the Whiskeytown Reservoir.

The Keswick to Clear Creek to Trinity transmission line being constructed by the John M. King Company with Cecil Sand and Gravel on the concrete.

Clearing on the Whiskeytown Reservoir being done by Fred Drayer of Paradise.

RELOCATION

Construction of the relocation of Buckeye Creek road being done by the Lewis Construction Company with Trinity Sand and Gravel supplying the rock.

Tyee Construction Company doing the footings for the Power City Construction Company. This transmission line is from Cottonwood to Keswick.

Macco is doing the clearing and footings for the Commonwealth and Schulman Companies. This transmission line is from Cottonwood to Tracy.

Ray Kizer Construction has a number of brothers employed on the project at Canby.

Harms & Brown is busy with their road job at Eagleville. Sprague & Henwood is doing the test drilling on the McCloud Project, which is a good indication that this project will get going late this year.

NEW JOBS

Funds to start reconstruction of Highway 44 are included in the state's \$658 million road-building budget, adopted by the Highway Commission. The highway budget had allocated to buy rights-of-way for realignment of Highway 44, from Airport road to Palo Cedro; build about two miles of rock fill for Highway 99, along the shore of Shasta Lake south of O'Brien, for \$600,000; construct three miles of four-lane freeway on Highway 99 across the Tehama County line near Cottonwood for \$3.5 million; construct 1.9 miles of two-lane expressway on Highway 299 between the Lewiston road junction and Weaverville, for \$1.35 million.

Work on the fill at Shasta Lake will begin this fall in time for completion before the addition of Trinity River water to the Central Valley Project increases the lake level.

The new face you see in the Redding office is Leo Cummins, dispatcher. Leo was formerly a dispatcher in the Oakland office.

Division, Bureau of Yards and Docks, San Diego; E. Irving Manger, chief of industrial relations, U. S. Army Engineers, Washington, D. C.; Kenneth Robertson, regional attorney, U. S. Department of Labor, San Francisco.

Harold Huxley, regional director, Bureau of Labor-Management Reports, U. S. Department of Labor, San Francisco; and Irving H. Perluss, director of California Department of Employment.

Stockton Report

Rundown of New Jobs

By WALT TALBOT,
AL McNAMARA and
GLENN DOBYNS

The extended strike and lock-out have not left much to write in the way of a news report for the past month. It so happens that the principal jobs in this district are either A.G.C. or E.G.C.A., leaving only a small group of employers who continue to work because they are not affiliated with either association. However, we sincerely believe that this situation will be remedied before this article is published.

The few jobs that have continued to operate are the road job on Highway 4, above Camp Connell, with Archie Till having subbed the clearing and grading from the Hooker Co.

Joe Vicini, of Placerville, is nearing completion of his stripping job for Gladding, McBean Company at Ione.

Al Haworth, of Stockton, is winding up his Forest Service job, between Dorrington and Board's Crossing, and is moving equipment south of Long Barn to construct logging roads for the Pickering Lumber Company.

LOW BID

Jack Campbell, Inc., of Fresno, low bidder on the levee construction and bank protection using quarry rock to the U. S. Army Corps of Engineers, in the amount of \$697,547, has subbed all but

the structures to Fresno Paving Co. which, in turn, will subcontract to various contractors. At this time Larry Aksland, of Manteca, has three cats on the job and A. J. Clow, of Stockton, has a truck crane.

Healy-Tibbetts and C. K. F-M & Graver Tank continue to drive piling at their three river crossings of the East Bay Municipal Utility District pipeline job.

Tellepsen Construction has almost completed the mill, near Copperopolis, which will be used to process the raw asbestos rock that is being quarried by Wells-Cargo, Inc.

M. J. Ruddy & Son is still picking up paving jobs in Modesto, and Standard Materials Co. continues to haul concrete to various projects in and around Modesto. However, the rock, sand and gravel plants, both here in Stockton and in Modesto, are curtailing production as the stockpiles continue to grow, due to the lag in construction orders.

FREEWAY

The Modesto Freeway job's low bidder is Maxwell and Matich Bros. of Colton, at \$5,388,000.

This project entails the construction of 15 bridges, four pumping plants, ramps, frontage roads and the grading and paving of 5.8 miles, with 1½ million yards of roadway excavation.

The State Division of Highways

reports that O. K. Mittry of Gardena was low bidder on 4.7 miles of Highway 108, east of Sonora (the Twain Harte grade project). The bid was \$1,378,000.

Granite Construction Co., of Watsonville, was low bidder on State Route 88, near Picketts in Alpine County, for approximately 3.8 miles of new road to be graded and paved and two bridges to be constructed for \$1,100,000.

The work program for this season will be tops for this area, with more jobs to be let each month. Those let since our last report are:

Nomellini Construction, \$459,000—water storage tank; A. Teichert & Son, \$141,267—asphalt paving; Pulliam Homes, Inc., \$120,267—equipment garage; A. Teichert & Son, \$41,971—bridge improvement; M. J. Ruddy & Son, \$99,843—subdivision improvements; Nomellini Construction, \$602,000—waste treatment works.

Elmer G. Wendt, \$47,220—spoil retention levees; Claude C. Wood Co., \$103,440—asphalt paving; George M. Shadle, \$118,642—building, Site 300; A. Teichert & Son, \$233,727—Jack Tone road; A. Teichert & Son, \$220,509—bridge construction; A. Teichert & Son, \$127,800—eight mile road; Myers Bros., \$445,100—home construction; R. W. Hubbard, \$47,742—water system.

ENGINEERS NEWS

STATIONARY ENGINEERS LOCAL 39

OPERATING ENGINEERS LOCAL 3

Published each month by Local Union No. 3 of the
International Union of Operating Engineers
(Northern California, Northern Nevada, States of Utah
and Hawaii.)

Office: 474 Valencia St., San Francisco 3, Calif.

AL CLEM Editor and Business Manager
PAUL EDGEcombe President
JERRY DOWD Vice-President
W. V. MINAHAN Recording-Corresponding Secretary
A. J. HOPE Financial Secretary
H. T. PETERSEN Treasurer

Problems In Path of '60s

This changing decade of the '60s is bringing new problems and crises in increasing numbers.

It's putting heavier and heavier emphasis on the necessity for strong, democratic unions — labor organizations with an informed membership and mature leadership.

Fifteen days before the expiration date of our old Northern California construction agreement, the bargaining team of Operating Engineers Local 3 reached an accord for a new pact with management negotiators.

MANY OF OUR Northern California members were off the job because of employer-labor difficulties in which they had no part. The work shutdown was a severe hardship. The bargaining picture had all the aspects of a log jam.

Our settlement was a key factor in breaking that jam.

Maturity in bargaining — on both sides of the table — pays off for both the employer and the union.

The economic well-being of the Engineers, it must be recognized, is a vital contribution to progress — the progress of our communities, our States and the Nation.

AS IN BASEBALL, all of us in organized labor must remember to keep our eye on the ball.

In this case, of course, we're talking about the trends in labor-management relations, in state and national politics, in the development of our communities, in the programs of special interest groups.

The demands of the '60s will be more and more complex. The threats to organized labor will continue in the form of legislative proposals sponsored by people lacking in foresight, in basic intelligence. And this is just one area of concern.

CRIPPLING shutdowns hurt everyone. Labor, of course, will be forced to use the weapon of economic action, as it has in the past, with the development of crises.

At no time can it afford the dubious luxury of complacency.

Its leadership must be alert, making mature appraisals to handle any problem in a manner which best serves the membership.

Our new Northern California construction agreement, running for three years, includes many advances — in wages and in fringe benefits. Establishment of the Journeyman and Apprentice Training Fund for Operating Engineers is a major step forward, for example.

THE OVERWHELMING acceptance of the new agreement at the district meetings, following the approval of our executive board, naturally is viewed with satisfaction by the officers and other members of the negotiating team.

But the decade of the '60s is a time of challenge. We can't forget it. By working together, we hope to be equal to the tests which will develop with each passing day, week, month and year.

'See, There's a Catch to It'



Consumer Advice

Some Notes On Quality

By SIDNEY MARGOLIUS

Intense retail competition today is producing, along with the claimed price cuts, a lowering of quality in some goods, especially furniture, rugs and some clothing. The National Retail Merchants Association itself recently protested to manufacturers the poor quality of some of the furniture its retailer-members have been receiving. Another notable example is continuous-filament nylon rugs, with stores quoting them at \$5 to \$13 a yard, and some of the cheaper ones very mediocre in quality, even if they are made of continuous-filament nylon.

To guard against poor quality, our advice is to stick to the middle price merchandise. The lowest-price merchandise may be of uncertain quality. But the most-expensive goods are not your best buy either.

It is revealing that a recent survey reports moderate-income wage-earners do tend to buy deluxe models of appliances and other goods. This phenomenon may result from a lack of confidence in quality or in one's own buying judgment. But while the lowest-price goods are not always dependable, the deluxe models do not always give you enough more to make the extra cost worthwhile.

Here is how manufacturers and retailers usually plan their selling strategy, so you can see where your best buys may be:

Merchandise generally falls into three price classes: low-end, medium price, high price. A store may carry a line of shirts at \$3.50, another at \$3.95, and a third at \$4.95. Or a washing-machine manufacturer may offer three models, one usually retailing for \$185, another for \$125 and a deluxe model at \$255.

Salespeople are trained to "sell you up" to a higher price. Sometimes advertised low-price models even are "nailed to the floor," as the trade calls it. In fact, a national appliance dealers' association reports that most dealers it surveyed have a planned policy of "selling up." A Kalamazoo store reported it displays about 50 TV sets "placed so that every low-priced set has one next to it with a few more features and a higher price tag." A Hutchinson, Kansas, dealer commented: "We try if possible to go into the customer's home to appraise the old TV. There we can more easily and

without interruption talk about the higher-priced models that would fit into her home."

That is the art of selling, but that is exactly why we recommend sticking to the middle-price lines. A medium-priced shirt merely may have a pocket eliminated or have shorter tails and fewer tucks than the highest-priced, but these changes do not affect its basic usability. Or a medium-price shoe may merely have less decoration. But the low-end shirt or shoe generally has basically cheaper materials, which does affect usefulness.

For example, a leading manufacturer has just brought out a new line of mattresses at \$39.95, \$49.95 and \$59.95. There is an important difference between the low and middle-priced. The \$39.95 mattress has a 220-coil innerspring unit, and the \$49.95, 312 coils. But for \$59.95 you still get only 312 coils, with the major difference merely a fancier ticking.

On washing machines, as this department previously pointed out, the lowest-priced models may provide only two washing cycles (one for regular and one for "gentle"), and the middle-price models, three cycles. The costliest deluxe models are basically the medium-price models with a few more additions such as more temperature and speed variations, a dispensomat, push-buttons instead of a dial switch and a backguard that lights up.

When shopping low-end items make sure they do have basic quality. A 220-coil mattress or a two-cycle washer still offer reasonable if not maximum usefulness. But in other cases, low-end goods may cost little but be a waste of money. You need to evaluate the usefulness for your particular purpose every time you shop.

On the other hand, it is not necessarily true that you get only what you pay for. Makers and sellers get their tallest profit on the deluxe models and highest price lines. For example, one manufacturer reports that it gives wholesalers and retailers, respectively, 13 and 20 per cent off the list price of its low-priced vacuum cleaners and 19 and 38 per cent on its highest. Thus, about a third of the list price of the moderate-price model goes to the distributors, but half the price of the most expensive. Such deluxe merchandise may give you more detail, more exclusive style but not much better basic quality.

You find this same pricing strategy in foods as well as clothing and home furnishings.

Copyright 1962

Comment On Medical Care

The need for medical care for the aged was stressed by Secretary of Labor Arthur J. Goldberg in an address before the New York convention of the United Hatters, Cap and Millinery Workers Union.

"I am thoroughly convinced that the American worker wants to earn and pay for the protection he needs to take care of problems after his working life, just as he does now for social security in general," Goldberg said.

"He is not only willing, but anxious, to contribute with his employers so that an insurance fund can be available; so that the care he needs is something he has paid for, and what he is entitled to have.

"This is the dignified, sensible, and fiscally sound way to meet the problem."

'Failure — We Can't Afford It'

In the present and immediate future there will be more and more demands for men of skill.

Thus was the importance of apprenticeship emphasized as more than 300 new journeymen in nearly 30 trades were honored at the 15th annual completion ceremonies of the Greater East Bay Joint Apprenticeship Council in Oakland on June 2.

"Tonight you become part of an elite of skill, of talent," said the principal speaker, John F. Henning, California's director of industrial relations.

He addressed a throng of 1,100 — the new journeymen, their wives, representatives of the council's many labor-management committees and officials of state and federal agencies.

"In an age of technological change we cannot afford the leisure of failure," Henning noted in touching on the importance of the skilled worker to

our survival in a world of communist challenge.

Trade certificates were presented at the dinner in Goodman's Jack London Hall by Charles F. Hanna, chief of the State Division of Apprenticeship Standards, and B. R. Mathis, regional director of the Bureau of Apprenticeship and Training of the U. S. Labor Department.

Checks on Hand

Checks are being held in the Sacramento office for the following brothers:

Jay O. Baker, James Corlon, David L. Carinalli, John E. Coburn, Richard J. Dallen, Gene F. Dorsey, Jack Doyal, L. T. Garrett, Wayne M. Hausauer and James W. Harrison.

James Maupin, Don M. Randall, Wm. F. Robblee, N. Paul, Lawrence E. Scott, James A. Smith and E. H. Wilson.

MEETING NOTICES

August

Stockton—Aug. 1, Wednesday, Engineers Bldg.

San Jose — Aug. 6, Monday, Labor Temple, 45 Santa Theresa.

Oakland — Aug. 9, Thursday, 2315 Valdez.

Sacramento — Aug. 14, Tuesday, CELT Bldg., 2525 Stockton.

September

Fresno — Sept. 4, Tuesday, 3120 East Olive St.

Semi-Annual Meeting

★ ★ ★
JULY 14, 1962
SATURDAY, 1 P.M.

San Francisco Labor Temple, 16th & Capp Sts.

★ ★ ★
Ukiah—Sept. 6, Thursday, Labor Temple, State Street.

★ ★ ★
Salt Lake City—Sept. 14, Friday, Teamsters Hall, 443 So. 6th East.

★ ★ ★
Reno — Sept. 15, Saturday, Reno Musicians Bldg., 120 W. Taylor.

SWAP SHOP: free want ads for Operating Engineers

FOR SALE

MOBILE HOME — 1956 Spartan Imperial, two bedroom, \$3,000. Wishington Well Trailer Park, 3998 Castro Valley Blvd., Castro Valley, Calif. Space 16. Nicholas Antifaev, Reg. No. 854015.

40 ACRES, Lassen County, 1 1/2 miles east of Wendel. Fenced, cleared and level. 3-room house, well, electricity. C. L. Syth, Box 46, Wendel. Reg. No. 425040.

PUPS—English Setter. Show quality. Six months old. All shots, AKC registered. Frank Wallace, Redwood City. Phone EM 9-7807, Reg. No. 862090.

WINCH, 2-ton, hand operated, 2-speed; Berkeley Jet Pump, 3-horsepower with 72 ft. 2 1/2-inch pipe. Oscar A. Anderson, 1509 Mission Avenue, Carmichael, Calif. IV 9-9492. Reg. No. 326959.

SHETLAND MARES (4), Yearling Fillies (2). Registered Stallion, Arabian colt. D. F. Coates, 12709 Avenue 328, Visalia, Calif. Phone 732-3729. Reg. No. 79594.

VIEW LOT, Cold Springs, Sonora Pass Vacationland. On county road, 1/4-mile to Highway 108. Dodge Ridge 7 miles; Tuolumne River, 2; Stanislaus River, 5. Water, electricity. Write: J. O. Atkinson, Box 511, Twain Harte, Calif. Phone, JU 6-3828. Reg. No. 386417.

MOBILE HOME, 1959 Columbia, 42 x 10. Wall to wall carpet. Sell equity. William Dorresteyn, 1153 13th St., Space 2, San Pablo, Calif. BE 5-7777.

UTILITY BODY, all steel — for 1/2-ton pickup. \$100. Mervin A. Gowrie, 3809 Merrily Way, Sacramento 21, Calif. IV 3-5801. Reg. No. 985731.

JAW CRUSHER, heavy duty, 8x14 in. Never been used. \$500. Thomas Jenkins, P. O. Box 25, Coulterville, Calif. Phone: TROjan 8-3465. Reg. No. 707227.

PUPS, American Bull terriers, U.K.C. Registered. Bred right for wild boar hunting. Sell or trade for anything. \$75. Phone 2-2862, Clement J. Sequeira, 335 Eastman Lane, Petaluma, Calif. Reg. No. 1043710.

POWER UNIT, Hercules, 6 cylinders, 92 hp, twin disc clutch, \$400. George H. Ray, 1669 LaBonta Way, Concord. Reg. No. 594296.

DIAMOND DRILL, 1 3/16 portable hydraulic, 200-ft. rod, 2-core, 3-plug, 2 carbide bits. Complete setup; excellent shape. \$1,350. Thomas Jenkins, P. O. Box 25, Coulterville, Calif. Reg. No. 707227.

BACKHOE, 3/8 Hydra, 200-amp. welder. Lgt. plant combination. Portable, all accessories, including trailer. Sale or lease. John Zwengel, JU 3-0719. Reg. No. 719402.

TRENCHING MACHINE, 110 Cleveland. Digs 18 to 24" wide, 5 1/2' deep. \$3500. Write: James Hiner, 415 Imperial, Modesto. Phone: KE 7-3572. Reg. No. 328847.

FURNACE, forced air. Western filtered comfort. Apartment size, 250-000 BTU. A-1 shape. Automatic controls. \$300. Phone: Russ Gary, ELgin 7-2958. San Leandro. Reg. No. 928045.

1956 TRUCK CRANE, 25-ton model 355, P&H. Excellent condition, 100-ft boom, 30-ft. jib. Write: Louis Eck, 19943 Redwood Rd., Castro Valley. Phone: JE 7-8194. Reg. No. 346986.

TRAILER, 1956 Paramount, 1 bedroom, 8' x 40'. Carpeting, awning, cooler, extras. Edward Sylvain, 1609 Sunnyvale Avenue, Walnut Creek. Phone 935-2904. Reg. No. 819275.

TRAILER, Sportcraft aluminum. Sleeps 4. Electric refrigerator, lights, butane stove. \$500. George Essigman, 2070 Sutter, San Francisco. JO 7-8196. Reg. No. 947262.

BOAT, open cockpit runabout; 17 1/2 foot; 1959 272-in. Ford overhead engine. Fully-equipped; lights, horn, trailer. Licenses, taxes paid. \$650. Walter Powers, Vallejo, Calif. Phone: MI 4-1392. Reg. No. 494288.

DRIVE-IN CAFE, 2 trailer spaces with canopies, 2 cabins on 1/2 acre. All utilities, near lakes, hunting, fishing. Pine Cone Drive-In, Forest-town. Calif. John Zachary, Reg. No. 883716.

DOG HOUSE, large, new insulated. Painted inside and out. \$20. Phone AL 2-0583. M. J. Sigall, 1033 Windsor Street, San Jose. Reg. No. 854352.

CABLE CARRYALL, Jumbo 6.8 Yd. Good condition. \$1,000. LeTourneau double drum cable unit, will fit TD 14, TD 18, or HD-10, \$250. Ernie Henriquer, 43442 Bryant Street, Fremont. OL 6-1067. Reg. No. 625863.

DUMP TRUCK, V-8 Ford Roller, various hand tools. 2-door Chev. '52. Dodge Pickup, '49. Chevy Dump Truck '47, whole or part. George E. Pearson, 1147 Alberni St., Palo Alto. Reg. No. 348397.

1956 FORD V-8, 1/2-ton pickup. 3-speed transmission, new tires, wrap-around bumper. \$600 cash. Write: Duke Dooley, 3556 High St., Oakland 19, Calif. Phone: 533-7964. Reg. No. 286146.

1 1/2 ACRES, half-mile from Grant Union High School on Fell Ave., Del Paso Heights. Small down or swap for foothill property. \$4000. Write: Dick H. L. Cooper, 5761 Redwood Highway, Santa Rosa, Calif. Reg. No. 292566.

3 1/2 ACRES, English walnut producing. Large modern house, completely furnished. Tractor and implements, 2 wells. Family fruit trees. Good hunting & fishing. \$6000 down. Write: Al Chapman, Stonyford, Calif. Reg. No. 351266.

LE TOURNEAU, 4-yd. carryall. Cable driven, good rubber. \$300. Also 12" American sticker and motor. Belt driven. Best offer. Write: Walter Young, 4300 Fraga Rd., Hayward, Calif. Phone: LU 1-2517. Reg. No. 732140.

UPRIGHT FREEZER, 22-cu. ft. Carrier. Excellent condition. \$300 cash. Write: A. Snyder, 42077 Miranda, Irvington, Calif. Phone: OL 6-2283. Reg. No. 369280.

ROAD OILER, 100-gal. weed killer, termite control sprayer mounted on 1950 Ford pickup. \$400 or trade for pickup. Write: Manuel Simas, 22177 Avam St., San Jose, Calif. Phone: CY 5-0217. Reg. No. 707363.

BLOCK MACHINE, Wards. Makes 8x8x16" blocks. Like new. \$60. Write: Frank Rees, 3406 Somerset Ave., Castro Valley, Calif. Reg. No. 657828.

JEEP, 1945 Good condition, 1954 6-cylinder, Studebaker engine. New rings, big radiator, 5 Army tires, 6-ply. Warren hubs, tow bar, canvas top. Write: Eugene Mendes, 5355 Radele Ct., Fremont, Calif. Phone: SY 3-3155. Reg. No. 879752.

TRAILER, 1956 Godentate. 2 bdrm. 8x40. New drapes, awning. Cooler, plus other extras. Excellent condition. Write: Gary Burghardt, Rt. 1, Box 505, Antioch, Calif. Phone: PLateau 7-5438. Reg. No. 939853.

16 FT. TRAILER, Go-Lite. Sleeps 5. Gas lights, electric brakes. \$750. Write: W. L. McElroy, 162 Duane St., Redwood City, Calif. Reg. No. 1082358.

4-D CAT, Hyster winch, hydraulic blade. Wide track. Logging cab, A-1 condition. \$4500. Write: Clyde M. Barnes, 2435 21st St., San Pablo, Calif. Phone: BEacon 3-7657. Reg. No. 1027800.

7-ROOM HOUSE and carport, 2 baths. Approx. 1 acre. 2 fireplaces, hardwood floors, brick patio. In canyon highlands. Write: C. L. Laswell, PO Box 54, Oroville, Calif. Phone: LE 3-4958. Reg. No. 1054892.

1 ACRE in Valleyview acres. 4 mi. north of capital in Sacramento county. Clean. \$5000, terms. Write: C. E. Hoffmeyer, Rt. 1, Box 548, Fort Bragg, Calif. Reg. No. 745045.

3 BEDROOM stucco house, 24x48 quonset bldg. cement floor, 220 wired, ideal shop, on tremendous lot, income potential. Write: Grover Armstrong, 2168 N. F St., Stockton, Calif. Phone: HO 5-7738. Reg. No. 939579.

MOUNTAIN HOME, 3 BR, LR, kitchen, pantry, bath downstairs, 1 BR and full attic upstairs. Ideal skiing, hunting, fishing. \$8500. Terms. 15 miles E. of Sonora. Write: Harold McMillan, Gen. Delivery, Moab, Utah. Reg. No. 772867.

THREE-QUARTERS ACRE, near Le-moore Air Base on Highway 41. Garage. Shade trees, 2 wells, 2 pumps, 1/4 acre, grocery store building, 80x45, with equipment. 600-gallon storage tanks, 2 pumps. Write: C. A. Menefee, 957 So. Main, Porterville, Calif. Reg. No. 336092.

TRUCK CRANE and backhoe combination for sale or consider trade for house, lot or multiple dwelling. Write: W. H. Morison, 1231 Oxford St., Berkeley, Calif. Phone: THornwall 3-6949. Reg. No. 1075452.

5 ACRES, house, well, electricity, on new road to Mt. McKinley. Good hunting, fishing. Also 160-acre homestead relinquishment. Write: Charles Spiess, Wasilla, Alaska. Reg. No. 964966.

WHITE REAR end reduction unit for Calweld rigs, ready to go. No exchange required. Reduced price. Write: James M. Taylor, 2533 - 19th Ave., Oakland 6, Calif. Phone: KE 6-6022. Reg. No. 912149.

BAR BELL, 200-lb. plate-loading, 6-ft. high steel bar with friction clamp collars. \$54. Write: Chester O. Teegarden, 2225 Downar Way, Del Paso Heights, Calif. Reg. No. 976309.

TWO-THIRDS ACRE, with duplex and old-type home. Also excellent building lot, Highway 20 frontage, overlooking the Noyo River and the new proposed Noyo Basin. Year-round rental income. Write: Charles A. Haun, Rt. 1, Box 177, Ft. Bragg. Reg. No. 620138.

JIB 20' for model 150 P & H Crane, good condition, easy adaptable to any crane. \$450. Write: Louis Eck, 19943 Redwood Road, Castro Valley, Calif. Reg. No. 346986.

36-ACRE FARM on Sevier River, 1 mile southwest Elsinore, Utah, on Highway 89. 28 acres cultivated. 25.5 shares water. \$12,000. Write: F. L. Higgins, Elsinore, Utah. Reg. No. 908570.

TWO JAEGER PUMPS, 1 1/2" and 2" pumps. 2" pump on balloon tire trailer. Both in excellent condition. Write: Don Hover, 740 Farrington Lane, Burlingame, Calif. Phone: DI 2-4434. Reg. No. 845410.

CAMPER, aluminum, for long wheel-base pickup. 6' x 8'. \$325. Walter Burris, 571 South Murphy, Sunnyvale. Phone 739-3851. Reg. No. 535818.

TRUSSES, 8-36" bolted span trusses, makes building 36' x 180', \$500. Irrigation pump and column, 10 horse, 3 phase Peerless. \$600. M. B. Rose, 416 Horn Ave., Santa Rosa. LI 5-2746, LI 6-4121. Reg. No. 1059628.

FLOWERING PLANTS, shrubs, evergreens, conifers, trees, garden tools, plant food, fertilizer, insecticides. Open seven days. Wayside Gardens, 289 Lake Boulevard, Redding. CH 1-5949. Al Noltamy, Reg. No. 295000.

BRICK LODGE, Huge oaks, fruit, lawn. One mile to lake. Electric kitchen, tile bath, fireplace, patio, carport, bedroom, living room with beam ceiling, screened sleeping porch. Write: Gus B. Laws, P.O. Box 956, Clearlake Highlands, Calif. Phone: WYman 4-6530. Reg. No. 268890.

BUCK GOAT, Registered, 9 month old Nubain. \$40 or will trade for doe. Write: J. L. Bonney, Rt. 1, Box 2197, Applegate, Calif. Reg. No. 918832.

SAWMILL, Sacrifice for \$1500. Two-man operation. Cuts 3000 board feet per day. 48" saw. T.D. 14 International diesel engine. Top running condition. Write: Ralph Kidwell, 21575 Norman Drive, Los Gatos, Calif. Phone: EL 4-2901. Reg. No. 947108.

35 ACRES beach property, plus 4 acres fertile soil. House, garage, barn—All newly painted. Pressure system, two new septic tanks. Near Ft. Bragg. Write: Clyde M. Barnes, 2435 - 21st St., San Pablo, Calif. Phone 293-7657. Reg. No. 1027800.

TRAILER, heavy duty. Dual tires, brakes, lights, licensed, extra tires. Fine for Fordson or Case backhoe. \$400. Tractor, Ferguson, with loader and Pippin backhoe. Fine condition. \$1,900. John Martison, 2214 Russell, Berkeley, TH 5-7580. Reg. No. 865574.

TRAILER, 1958 Eastern Built, 31x8. Thermal windows, complete with T.V. Beautiful condition. \$2750. Write: Jack Brown, 2335 Kirkham St., San Francisco, Calif. Phone: OV 1-1754 or Morgan Hill, PR 9-3438. Reg. No. 434969.

DRAGLINES, Lima Model, 34, 3/4 yards. Serial No. 2742. P & H Model 255-A. Serial No. 6380. \$5,000 each. Write: Vernon Dark, Paterson, Calif. Phone: TYler 2-7921. Reg. No. 381503.

3 HOUSES, six lots, income \$147.50 month, plus owner's two-bedroom home. Flowers, trees, lawns; \$21,000, terms. Illness. Write: Frank Dias, Box 392, Williams, Calif. Reg. No. 249022.

LOT, 67x91, Lake Tahoe, Calif. \$3500. 3 miles to State line near Y junction. School nad shopping 1/2 mile from South Lake. Write: Floyd Dotson, 136 - 3rd Street, Richmond, Calif. Phone: BEacon 3-8013. Reg. No. 915680.

TO SWAP

WELDING MACHINE, Lincoln and cash for real estate, or anything. Don Phillips, 1025 Everett Street, El Cerrito, Calif. Reg. No. 572666.

DUPLEXES — Two, sell or trade. \$4,000 equity. Balance \$8,750.00 at \$65 per month. O. L. Black, 2401 Casa Way, Walnut Creek, Calif. YE 4-8369. Reg. No. 921384.

WELDING MACHINE, Lincoln, new, plus cash, for real estate, or what have you? Don Phillips, 1025 Everett Street, El Cerrito. LA 6-9250, Reg. No. 572666.

TRAILER, 1959 Melody 2 bedroom, 10' x 50', \$800 cash or trade for car, furniture. Balance due \$3,359.36. Wesley L. Hixson, Fortuna, Calif. Reg. No. 1082407.

CLEARLAKE HOME, one block from lake, sale or trade, \$4,000 equity, balance \$8,750 at \$65 per month. O. L. Black, 2401 Casa Way, Walnut Creek. VE 4-8369. Reg. No. 921384.

RULES FOR SUBMITTING ADS

• Any Operating Engineer may advertise in these columns without charge any PERSONAL PROPERTY he wishes to sell, swap or purchase. Ads will not be accepted for rentals, personal services or side-lines.

• PRINT OR TYPE the wording you want in your advertising on a separate sheet of paper, limiting yourself to 30 words, or less, including your NAME, complete ADDRESS and REGISTER NUMBER.

• Allow for a time lapse of several weeks between the posting of letters and receipt of your ad by our readers.

• Because the purpose should be served within the period, ads henceforth will be dropped from the newspaper after three months—unless we are advised otherwise.

• Address all ads to: Engineers Swap Shop, AL CLEM, Editor, 474 Valencia Street, San Francisco 3, California. Be sure to include your register number. No ad will be published without this information.

MOVING?

So you will not miss one issue of Engineers News
BE SURE to advise us of your change of address.
REG. NO. _____

NAME _____
OLD ADDRESS _____
CITY _____
NEW ADDRESS _____
CITY _____

Clip and mail to Engineers News,
474 Valencia St., San Francisco 3, Calif.



Utah Gives Project Roundup

By JAY NEELEY, MERLIN BOWMAN, JOHN THORNTON,
VANCE ABBOTT and LAKE AUSTIN

Work in the Salt Lake City area is good at this writing. The larger jobs are only working 40 hours but some of the smaller ones are putting in overtime. Paying crews are working all over the state trying to patch the streets and considerable new paving is to be done on the access roads.

Gibbons and Reed have a number of our brothers working on various jobs in Salt Lake. The Freeway and Victory Road jobs are going steadily and new work is started as soon as the equipment is available. The drain pile driver is about done and the rest of the fill will start soon.

Smith Brothers Paving has many small jobs working and one good-sized paving job to do on the Bacchus plant. The equipment is at one job one day and another job the next.

DRIVING

Raymond Concrete Pile has about five weeks of driving to do on the Federal Building. It has two drivers on the job now and seems to be rolling along good. One of our Brothers, Zenos Levorsen, had a mild sun stroke the first day of the job and will have to take a few days off and sit in the shade. Incidentally, the weather is plenty warm now.

Shurtleff and Andrews have equipment all over the state and some equipment in Idaho. They sent their big rig out of state for one job for a couple of months.

The other crane rental outfits are doing a good business right now with a lot of small projects around town.

Of interest in this locale is Sandy City's new \$600,000 sewage treatment plant at 8700 South 7th West. This plant is the first municipally-owned and operated activated-sludge plant in Utah and for that reason alone many communities which lack space for a sprawling sewage treatment plant will want to know how it works out. There has been quite a bit of controversy over the plant as Midvale City had earlier filed a suit asking an injunction to halt construction of the Sandy plant at its present location, claiming that it would be a nuisance.

PROVO AREA

Work in the Provo area is holding up fair with Consolidated Western still busy on the new type precipitation at the open hearth furnaces which should last

until September, and W. W. Clyde Company doing the (roller coaster) part of the Lehi Freeway, which is the final part of its job.

Reed-Sumsion is working two 40-hour shifts on the Provo Freeway, the first shift consisting mostly of belly dumps and the second one of pulls. As soon as the Provo River recedes the company plans to cut back to a one-shift operation.

United Concrete Pipe Corporation has failed to come up with any orders for pipe recently and consequently had to lay off several of our operators.

Tiago Construction is nearing completion with the grade on the Duchesne Highway 40 job and is stockpiling gravel for the hot plant so it can move the crushing plant back to Colorado.

Strong Company is also nearing completion with the grade at Jensen and plans to move the hot plant on the job as soon as it finishes the asphalt on the mountain north of Vernal.

FLAMING GORGE

Work is back to normal at the Flaming Gorge Dam after the carpenters' walkout and, according to the company, concrete placement is on schedule. If work continues on schedule, the Bureau of Reclamation has tentative plans to start backing water in November of this year.

American Bridge Company is back to work with its original crew on the Cort Creek Bridge near Flaming Gorge after being forced down waiting for the completion of the footings for six weeks.

Wheelwright construction Company has moved its crew back to the job from Flaming Gorge pass towards Manila and should last most of the summer.

Stan Robbins Company has signed an agreement with us and have several of the members working on sub-contracts from Arch Dam Constructors and Gunther-Shirley and Lane Companies.

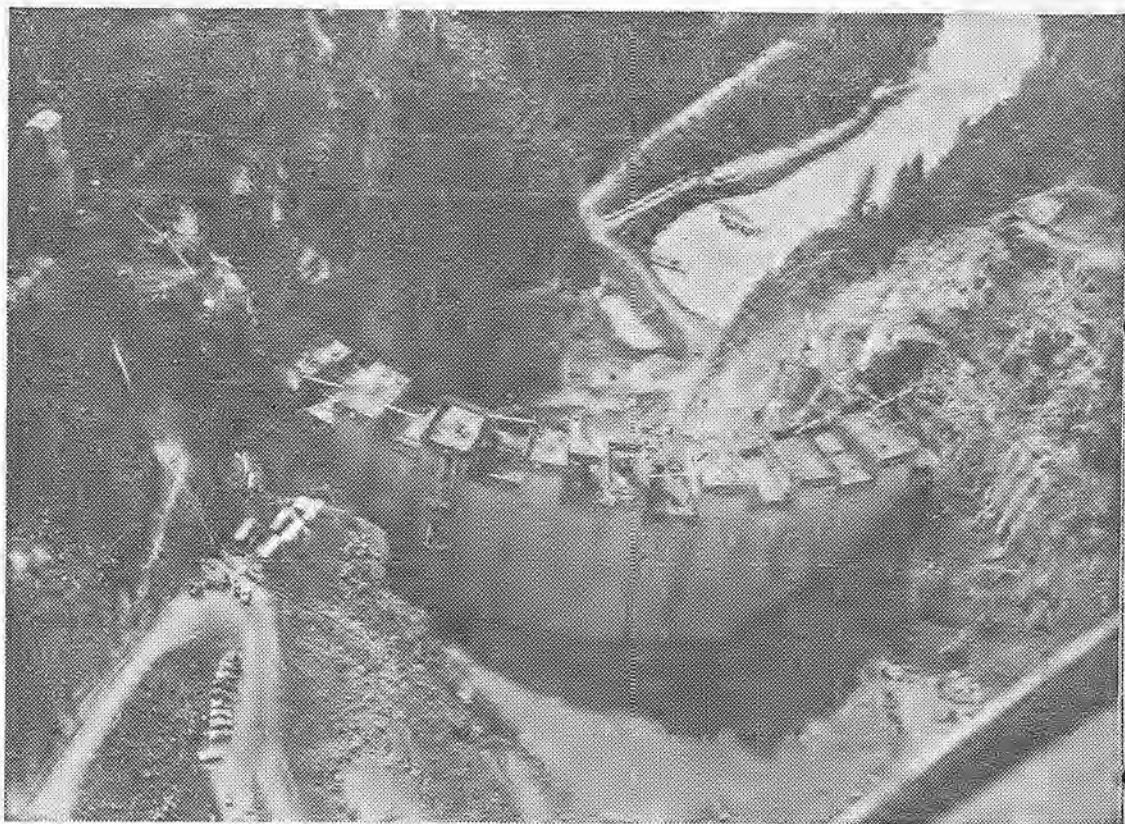
SOUTHERN AREA

We are having a good season here now, with most everyone working. In fact, we have been fortunate in being able to place a few of the California members in some classifications that we are short on.

Some of the early jobs are finished or nearly so, but in most cases new work has been let to keep the situation rather stable.

There are two more sections of Interstate 15 to be let some time soon, one in Beaver County and one in Washington County. If this develops it should keep most of the brothers who get on them busy until snow flies. The only other section of freeway being done in this area, by V. C. Mendenhall, is nearly finished and it would seem that more of it should be going if we are to keep up in this area.

We have had several sessions of negotiations with Utah Construction and Mining over the Cedar City Iron Mine contract which expired last month. We have taken two proposals and presented them to the members. They were both rejected by an overwhelming majority. We hope to get another meeting soon.



AERIAL PHOTO OF MONUMENTAL PROJECT
Here's A View of the Flaming Gorge Dam, Looking Upstream

Nevada Highway Jobs

By H. L. SPENCE and
BU BARKS

Gibbons and Reed Construction Company is well along with its highway job on Highway No. 6, just out of Ely, Nev., at Murray Summit. Some of the brothers are real happy with the job—not too many beefs. The steward seems to keep most everything under control when it's brought to his attention.

We have had some misunderstanding in the northeastern part of Nevada on the job at Jack Pot. Nielson & Miller from Twin Falls, Idaho, don't seem to want to pay some of the fringe benefits to the Engineers, and the end result was Operating Engineers Local 3 had to establish a picket line on the job. The same thing happened on LeGrande-Johnson, Inc., from Logan, Utah. They would not pay the fringe benefits to the operating Engineers, so there were pickets put on his highway job.

Wells-Cargo, Inc., has finished the west-bound side of its four-lane Interstate No. 80 job east of Lovelock and started the east-

bound lane. Willis Brothers from Winnemucca, Nev., has some of its rigs on the job.

PIPE LINE

Helms Construction Company has a pipe line job on Mill Street and one on West Plumb Lane.

Vinell Corporation has started its job at Elko, Nev., on Interstate Highway No. 80. This will be a good job for some of the brothers out in the Elko area.

Dodge Construction Company, Inc., is well along on its job on Interstate Highway 80, just east of Lovelock. They are really laying that hot stuff. This has been a good job for the Dodge hands.

Robert L. Helms Construction Company, better known as Bob Helms, has a job on West Seventh Street in Reno, Sproul Homes Project and on Skyline Boulevard.

The Levithan Mine has been few brothers are making a 40-reopened by Wells-Cargo and a hour week up on that job.

ANACONDA

Anaconda Copper is still at about the same pace in its operation. No reduction in manpower, only the normal equipment re-

pair, make this a very stable operation for the Engineers there.

Standard Slag is getting under way with its new plant, after a few months of drilling and stripping.

Alex Robertson, the general contractor, and Vinnell are getting under way with the Radar Station job behind Stead Air Base.

The Frank A. Tracy power station at the 102 Ranch, east of Reno, has a few men at this time and looks like it will be a lot better in the immediate future.

Meadows Construction Company of Bakersfield, has a few cats and a blade doing a road job for the Western Union out of Dayton, Nev. This job may also get better as time goes on.

A few small jobs like the hotels, restaurants, apartment houses and the University are plugging along with a few brothers on each.

The regular quarterly meeting was well attended, with Business Manager Al Clem reporting to the membership about settlement of the Engineers' contract in California.

Dam Project

The Budget Bureau in mid-June approved a report recommending Federal construction of the New Melones Dam on the Stanislaus River in California.

The Budget Bureau action was announced by U. S. Senator Clair Engle (D., Calif.), co-sponsor of the New Melones authorizing legislation with Senator Thomas Kuchel (R., Calif.).

Estimated cost of the project is \$114 million.

The Budget Bureau approval means that the Secretary of the Army can now transmit the report to the Congress and the project will be eligible for consideration for inclusion in the Omnibus Flood Control Authorization Bill of 1962.



NEVADA PROJECT — Digging in on one of the cuts on the Gibbons and Reed job near Ely, Nev. Brothers include Lynn Robison, operator 80-D; Morton Miller, oiler, and Bill Bossert, D-8 'dozer.